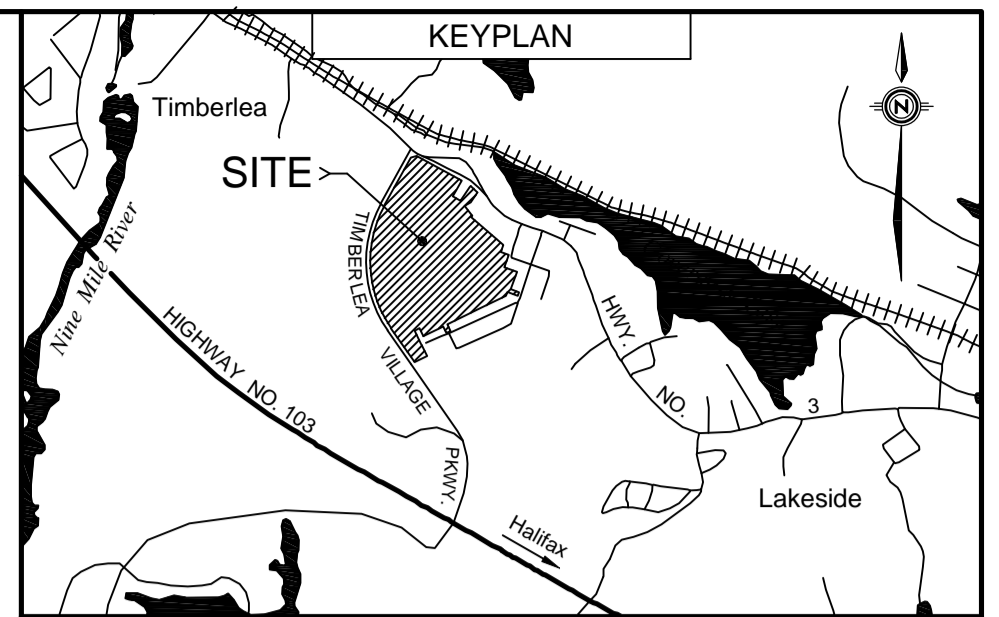
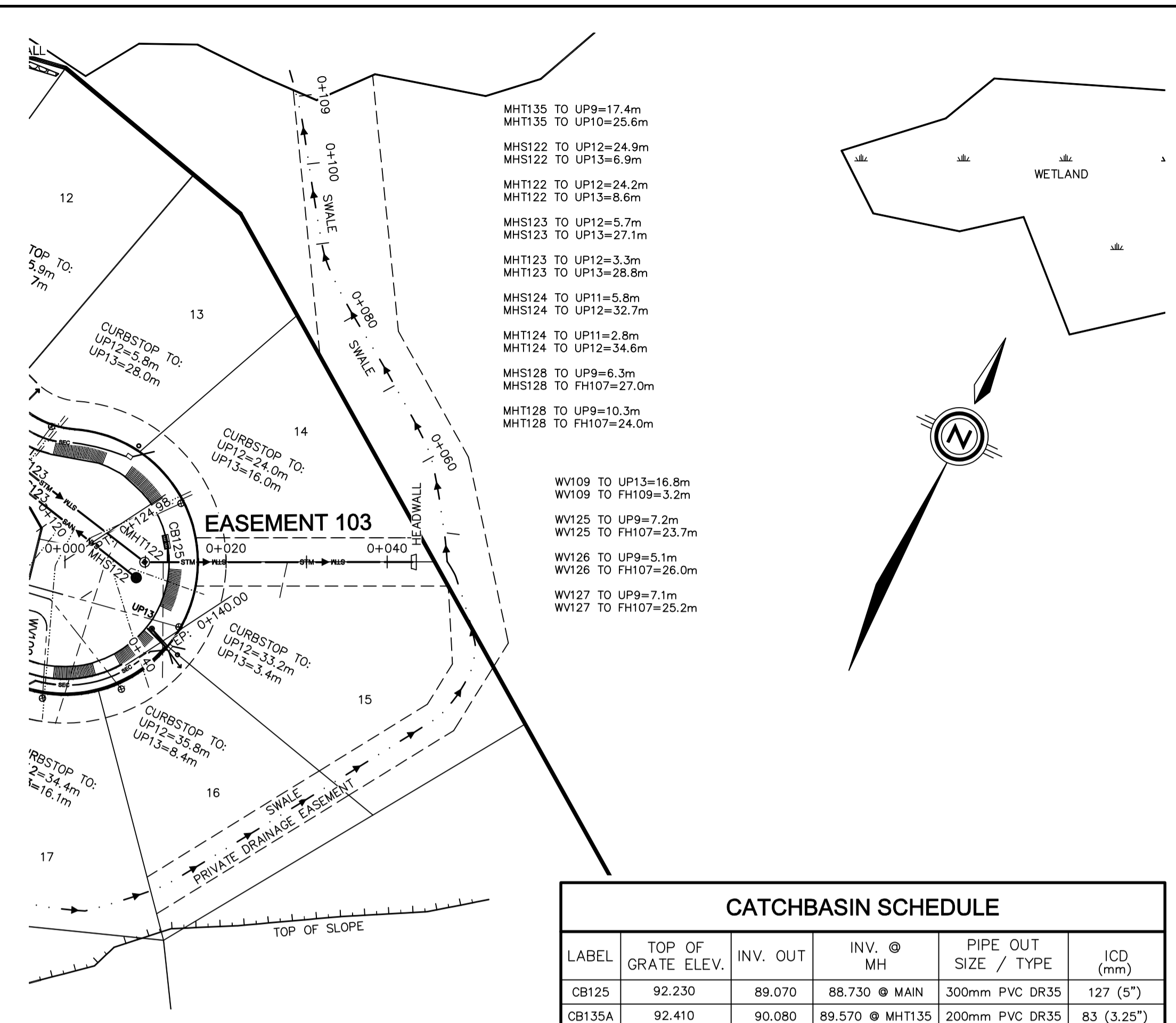
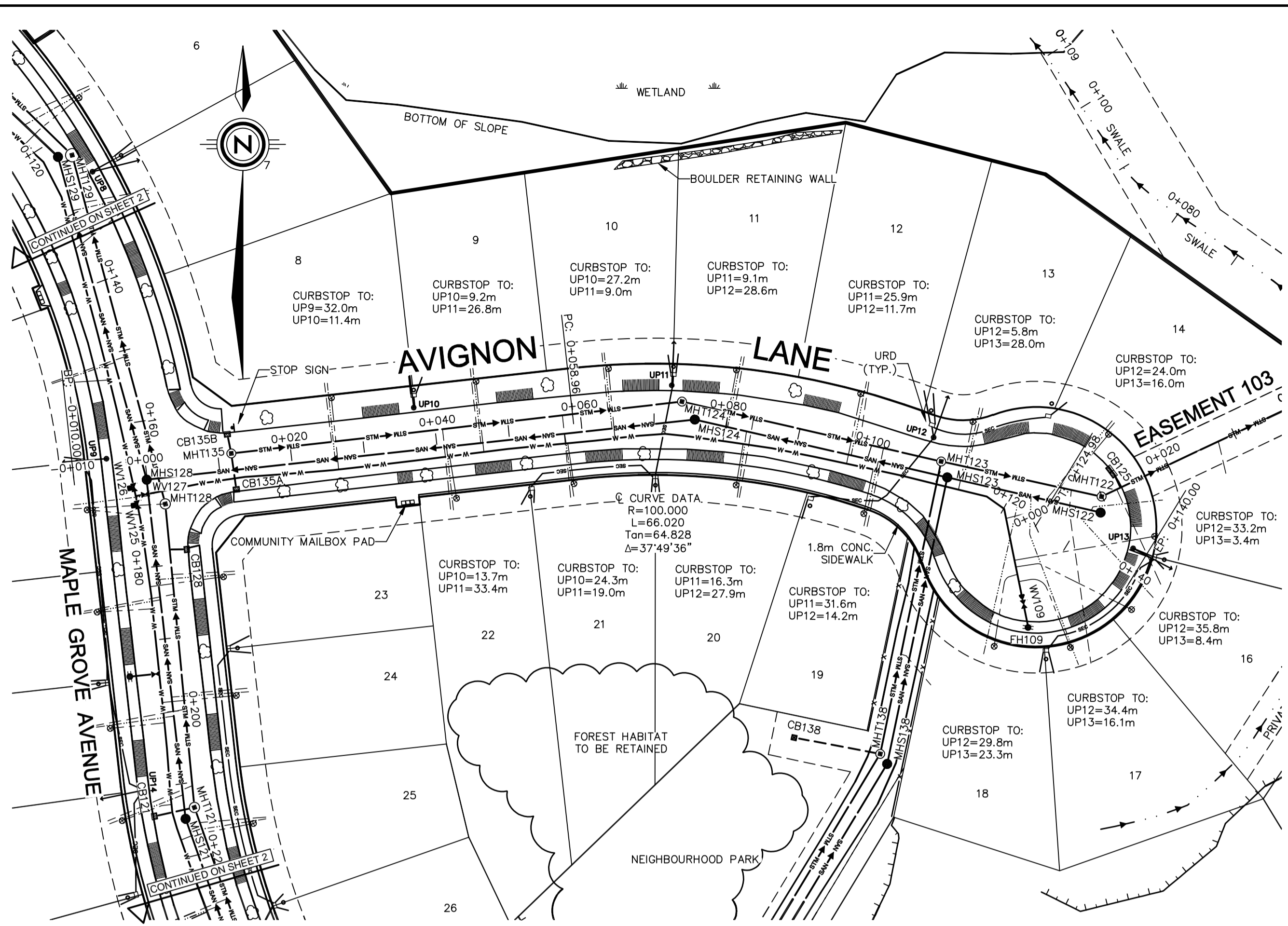


RECORD DRAWING

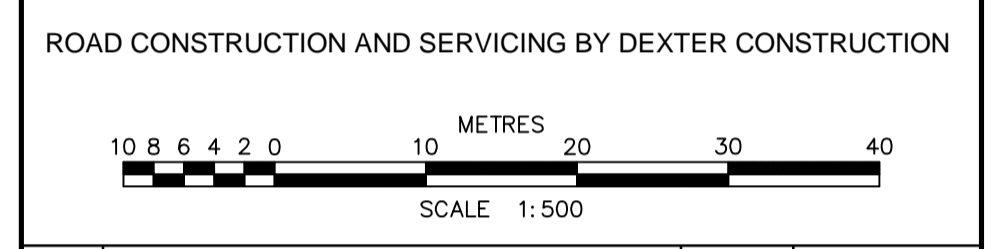


LEGEND

CONSTRUCTED		PRE-EXISTING	
	—		—
	—		—
	—		—
	—		—
	—		—
	—		—
	—		—
	—		—
	—		—
	—		—
	—		—
	—		—
	—		—
			—
			—
			—
			—
			—
			—
			—

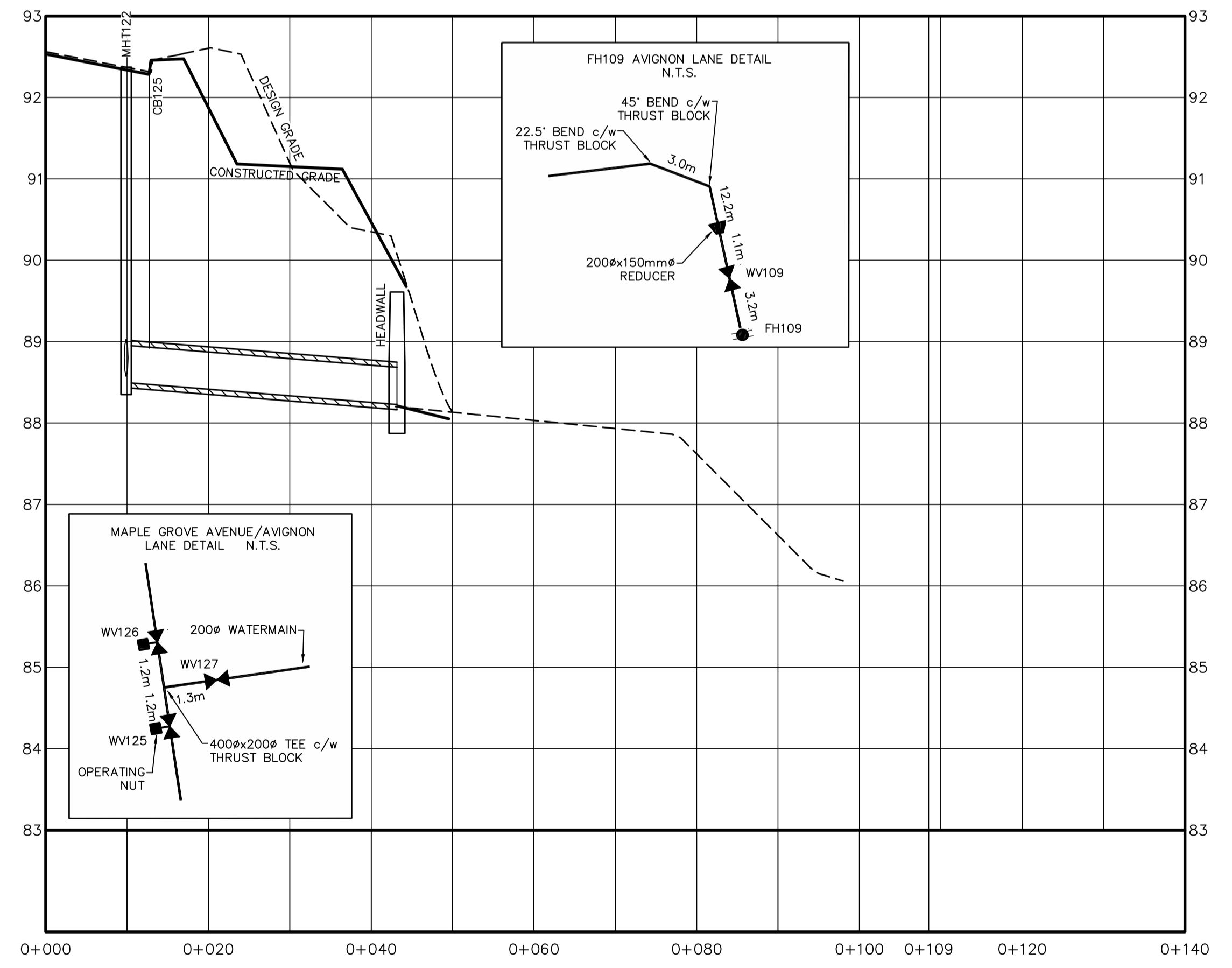
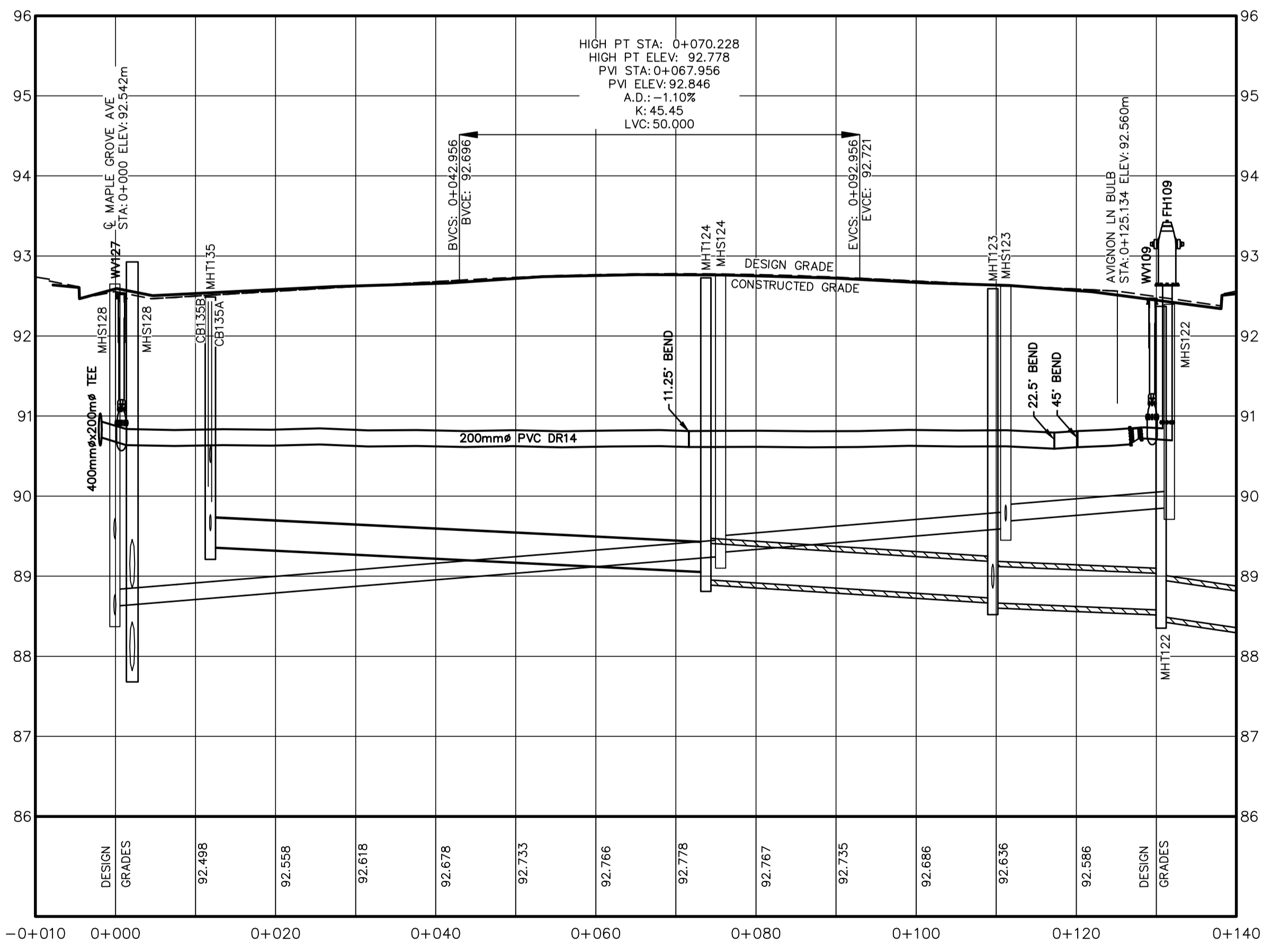
CATCHBASIN SCHEDULE

LABEL	TOP OF GRATE ELEV.	INV. OUT	INV. @ MH	PIPE OUT SIZE / TYPE	ICD (mm)
CB125	92.230	89.070	88.730 @ MAIN	300mm PVC DR35	127 (5")
CB135A	92.410	90.080	89.570 @ MHT135	200mm PVC DR35	83 (3.25")
CB135B	92.330	90.720	90.420 @ MHT135	200mm PVC DR18	76.2 (3")



ROAD CONSTRUCTION AND SERVICING BY DEXTER CONSTRUCTION

NO.	DESCRIPTION	CHK'D	DATE
6	FINAL RECORD DRAWING		25-NOV-2011
5	RECORD DRAWING		08-SEP-2011
4	ISSUED FOR CONSTRUCTION		08-FEB-2011
3	ISSUED FOR CONSTRUCTION		07-JAN-2011
2	REVISED AS PER HRM & HW COMMENTS		04-NOV-2010
1A	ISSUED TO CONTRACTOR		02-NOV-2010
1	REVISED AS PER HRM & HW COMMENTS		18-AUG-2010
0	ISSUED FOR REVIEW		30-APR-2010



SANITARY INVERT	88.630	88.250	88.600	88.960
SANITARY GRADE	75.607m ± 200mm ∅ PVC DR35 @ 0.82%		35.512m ± 200mm ∅ PVC DR35 @ 0.84%	
STORM GRADE	62.200m ± 375mm ∅ PVC DR35 @ 0.50%		36.469m ± 450mm ∅ CSA A257.2 650 @ 0.63%	
STORM INVERT	89.360	88.050	88.560	88.230

SANITARY INVERT	88.500	88.230
SANITARY GRADE	33.265m ± 450mm ∅ CSA A257.2 650 @ 0.81%	
STORM GRADE	33.265m ± 450mm ∅ CSA A257.2 650 @ 0.81%	
STORM INVERT	88.500	88.230

GENIVAR

1 SPECTACLE LAKE DRIVE
DARTMOUTH, NOVA SCOTIA
CANADA, B3B 1X7
PHONE: 902 835-9955 - FAX: 902 835-1645
WWW.GENIVAR.COM

CLIENT
NINE MILE RIVER INVESTMENTS LTD.
HALIFAX, NOVA SCOTIA

PROJECT
BRUNELLO ESTATES PHASE 1
TIMBERLEA, NOVA SCOTIA

SHEET DESCRIPTION
PLAN AND PROFILE
AVIGNON LANE / EASEMENT 103
STA -0+010 TO 0+140 / STA 0+000 TO 0+140

DATE: 30-APR-2010	SHEET
HORIZ. SCALE: 1:500	6
VERT. SCALE: 1:50	OF
DRAWN: CHLUTZ	26
CHECKED: LMACDONALD	
DWG. NO.: D09109-004_001	

GENIVAR REF. NO. D09109; K:\DARTMOUTH\2009\D09109.DWG; ENVS\RECORD DRAWINGS\D09109-004.DWG; 001; PRINTED: 9:33 AM; 25-Nov-2011; CHLUTZ