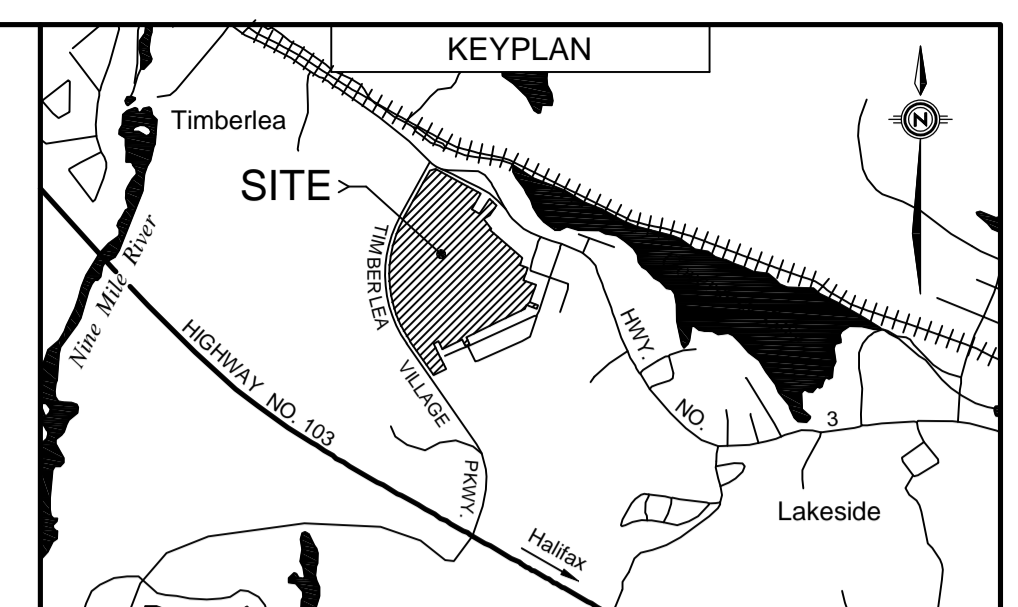
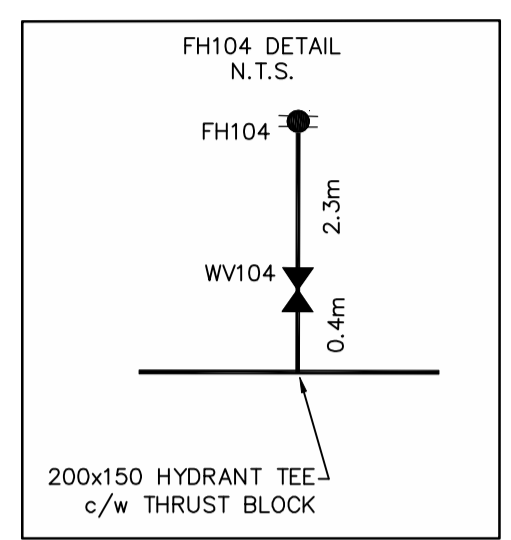
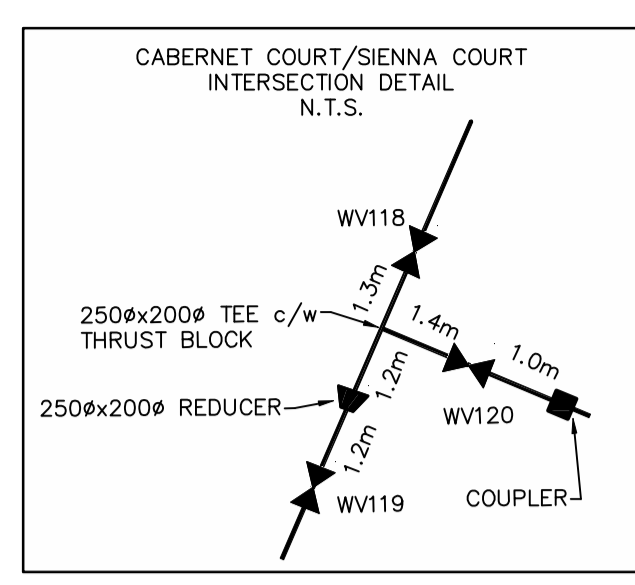
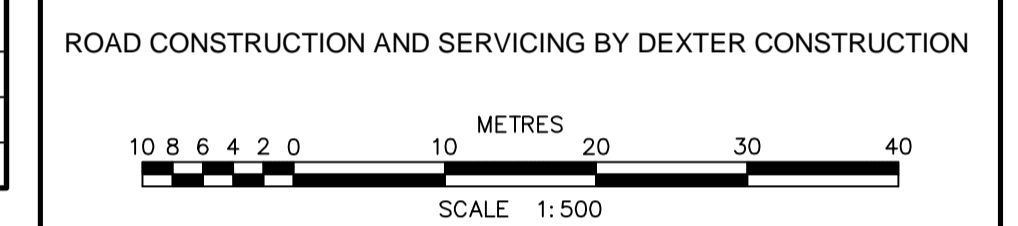


- MHT111 TO UP41=19.0m
- MHT111 TO UP42=15.1m
- MHS111 TO UP41=18.5m
- MHS111 TO UP42=15.1m
- MHT112 TO UP39=35.2m
- MHT112 TO UP40=7.8m
- MHS112 TO UP39=35.0m
- MHS112 TO UP40=8.2m
- MHT113 TO UP38=34.0m
- MHT113 TO UP39=4.6m
- MHS113 TO UP38=33.2m
- MHS113 TO UP39=5.9m
- MHT114 TO UP35=29.0m
- MHT114 TO UP36=6.4m
- MHS114 TO UP35=27.9m
- MHS114 TO UP36=5.5m

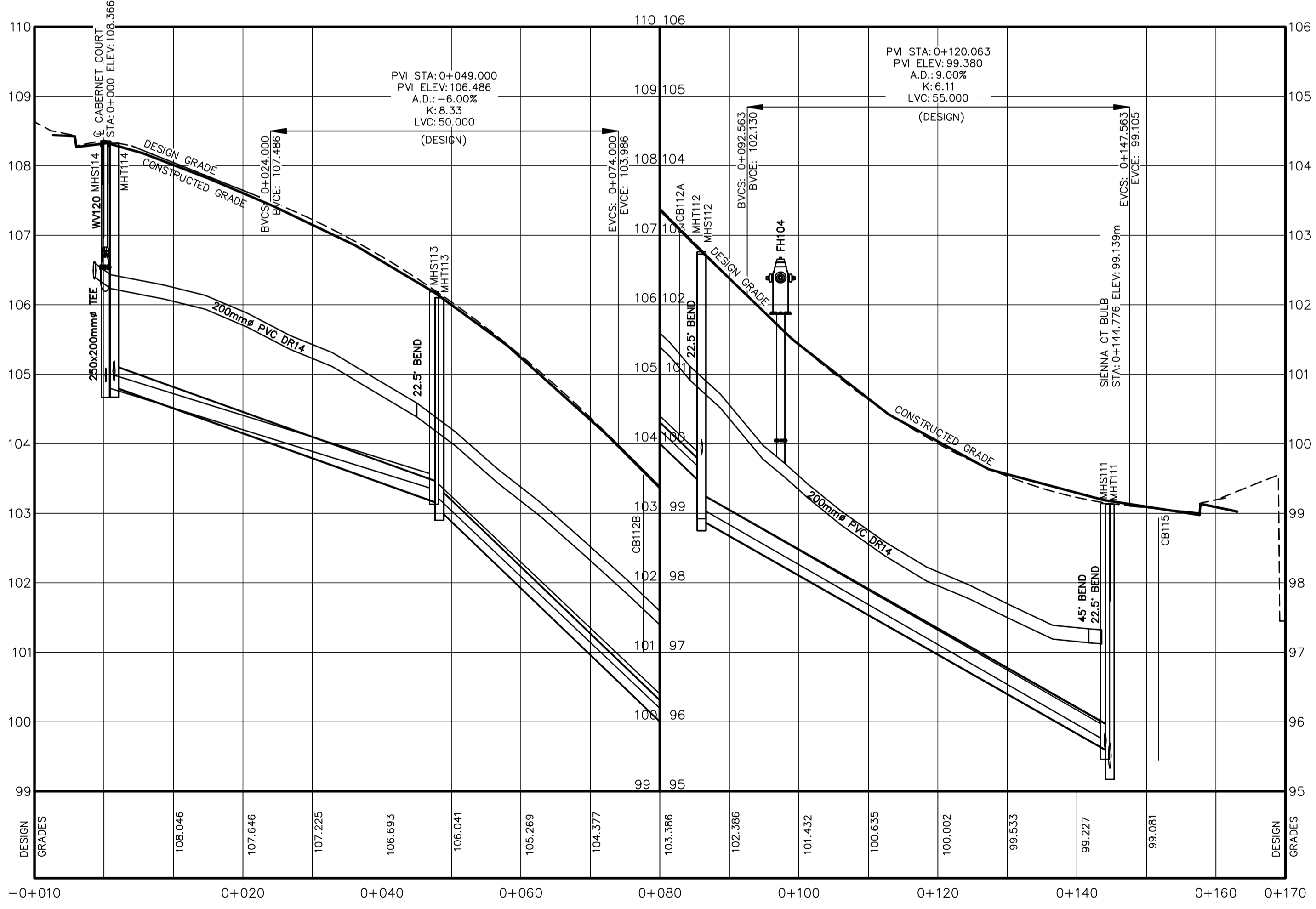
LABEL	TOP OF GRATE ELEV.	INV. OUT	INV. @ MH	PIPE OUT SIZE / TYPE	ICD (mm)
CB112A	102.940	100.290	99.860 @ MHT112	200mm PVC DR35	114.3 (4.5")
CB112B	103.490	101.150	99.840 @ MHT112	200mm PVC DR35	76.2 (3")
CB115	98.850	95.600	95.250 @ MAIN	300mm PVC DR35	76.2 (3")



CONSTRUCTED		PRE-EXISTING	
WATERMAIN & GATE VALVE	---	EW - 63	---
SANITARY MANHOLE & PIPE	---S---	ESAN - 63 - 103	---
STORM MANHOLE & PIPE	---S---	ESTM - 63 - 103	---
POWER/COMMUNICATIONS	---	ECH - 103	---
EDGE OF PAVEMENT	---	---	---
LOTLINE	---	---	---
PROFILE GRADE	---	---	---
STREET BOUNDARY	---	SANITARY LATERAL	---
PROPERTY BOUNDARY	---	STORM LATERAL	---
FLOW DIRECTION ARROW	---	WATER LATERAL	---
DRIVEWAY CUT	---	CATCH BASIN LEAD	---
SWALE/DITCH	---	HEADWALL	---
CATCH BASIN	---	ENDCAP	---
ARV CHAMBER	---	LIGHT STANDARD	---
FIRE HYDRANT	---	ROAD SIGN	---
STREET TREE	---	ALIANT PEDESTAL	---
UTILITY POLE	---	NSP URD BOX	---
		FENCE	---



NO.	DESCRIPTION	CHK'D	DATE
6	FINAL RECORD DRAWING		25-NOV-2011
5	RECORD DRAWING		08-SEP-2011
4	ISSUED FOR CONSTRUCTION		08-FEB-2011
3	ISSUED FOR CONSTRUCTION		07-JAN-2011
2	REVISED AS PER HRM & HW COMMENTS		04-NOV-2010
1A	ISSUED TO CONTRACTOR		02-NOV-2010
1	REVISED AS PER HRM & HW COMMENTS		18-AUG-2010
0	ISSUED FOR REVIEW		30-APR-2010



	0+010	0+020	0+040	0+060	0+080	0+100	0+120	0+140	0+160	0+170
SANITARY INVERT	104.820		103.350	103.280		99.630	99.070		95.730	
SANITARY GRADE		47.394m ± 200mm		38.794m ± 200mm		58.268m ± 200mm				
STORM GRADE		47.337m ± 300mm		38.827m ± 300mm		59.474m ± 375mm				
STORM INVERT	104.820		103.140	103.050		99.430	98.900		95.560	

GENIVAR
 1 SPECTACLE LAKE DRIVE
 DARTMOUTH, NOVA SCOTIA
 CANADA, B3B 1X7
 PHONE: 902 835-9955 - FAX: 902 835-1645
 WWW.GENIVAR.COM



CLIENT
NINE MILE RIVER INVESTMENTS LTD.
 HALIFAX, NOVA SCOTIA

PROJECT
BRUNELLO ESTATES PHASE 1
 TIMBERLEA, NOVA SCOTIA

SHEET DESCRIPTION
PLAN AND PROFILE SIENNA COURT
 STA 0+010 TO 0+170

DATE: 30-APR-2010
 HORIZ. SCALE: 1:500
 VERT. SCALE: 1:50
 DRAWN: CMLUTZ
 CHECKED: LMACDONALD
 DWG. NO.: 09109-007_001

SHEET
9
 OF
26