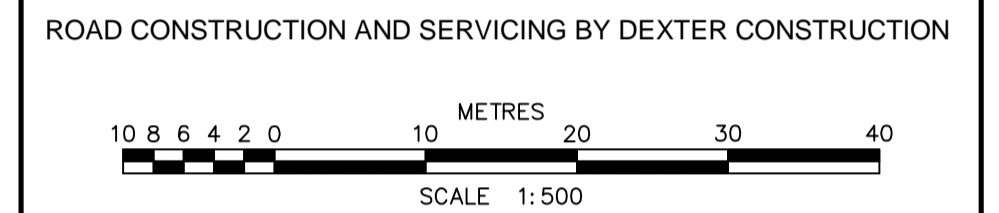
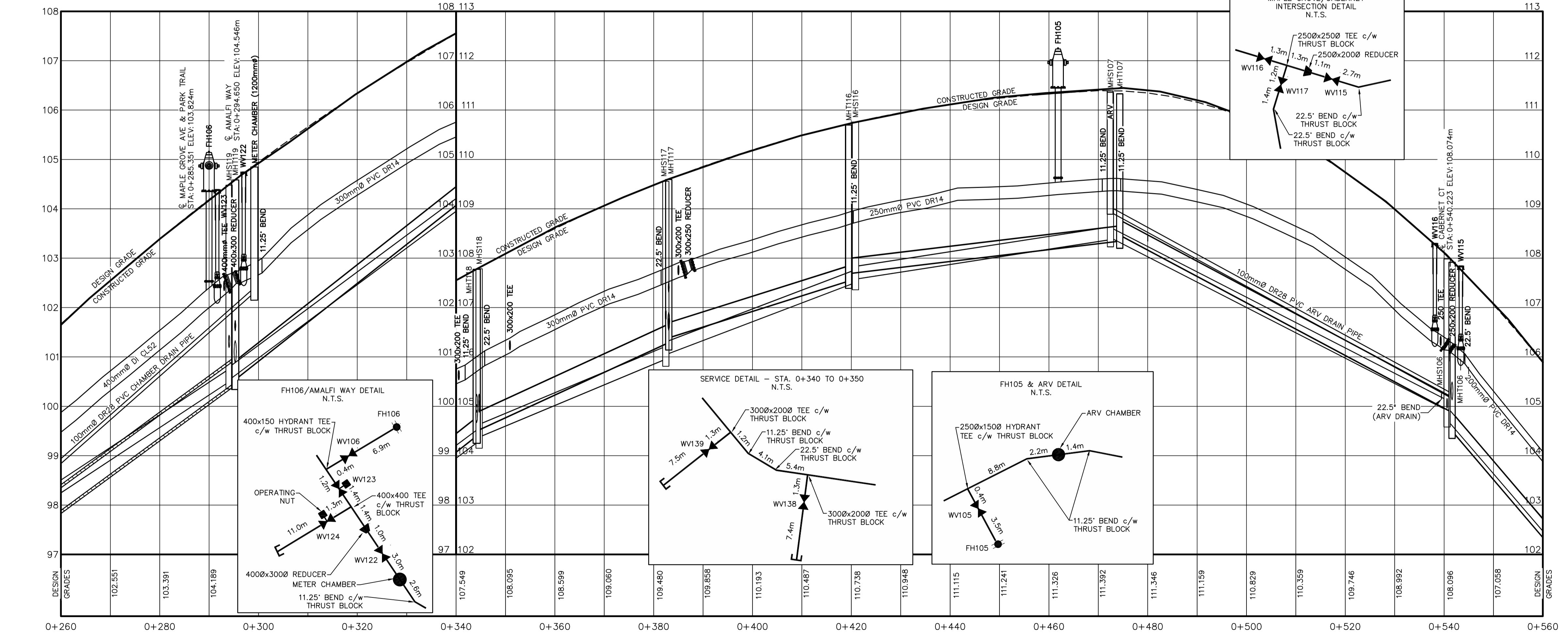


LEGEND	
CONSTRUCTED	PRE-EXISTING
WATERMAIN & GATE VALVE	WATERMAIN & GATE VALVE
SANITARY MANHOLE & PIPE	SANITARY MANHOLE & PIPE
STORM MANHOLE & PIPE	STORM MANHOLE & PIPE
POWER/COMMUNICATIONS	POWER/COMMUNICATIONS
EDGE OF PAVEMENT	EDGE OF PAVEMENT
LOTLINE	LOTLINE
PROFILE GRADE	PROFILE GRADE
STREET BOUNDARY	STREET BOUNDARY
PROPERTY BOUNDARY	PROPERTY BOUNDARY
FLOW DIRECTION ARROW	FLOW DIRECTION ARROW
DRIVEWAY CUT	DRIVEWAY CUT
SWALE/DITCH	SWALE/DITCH
CATCH BASIN	CATCH BASIN
ARV CHAMBER	ARV CHAMBER
FIRE HYDRANT	FIRE HYDRANT
STREET TREE	STREET TREE
UTILITY POLE	UTILITY POLE
SANITARY LATERAL	SANITARY LATERAL
STORM LATERAL	STORM LATERAL
WATER LATERAL	WATER LATERAL
CATCH BASIN LEAD	CATCH BASIN LEAD
HEADWALL	HEADWALL
ENDCAP	ENDCAP
LIGHT STANDARD	LIGHT STANDARD
ROAD SIGN	ROAD SIGN
ALIANT PEDESTAL	ALIANT PEDESTAL
NSP URD BOX	NSP URD BOX
EASEMENT	EASEMENT
SHOULDER	SHOULDER
CURB	CURB
SIDEWALK	SIDEWALK
FENCE	FENCE

LABEL	TOP OF GRATE ELEV.	INV. OUT	INV. @ MH	PIPE SIZE / TYPE	ICD (mm)
CB106C	108.740	106.230	105.380 @ MAIN	200mm PVC DR35	108 (4.25")
CB117A	109.700	107.340	106.580 @ MHT117	200mm PVC DR35	127 (5")
CB117B	109.530	108.930	107.310 @ MHT117	200mm PVC DR35	101.2 (4")
CB119A	105.270	102.540	101.560 @ MAIN	200mm PVC DR35	76.2 (3")
CB119B	104.520	102.190	101.540 @ MHT119	200mm PVC DR35	83 (3.25")



NO.	DESCRIPTION	CHK'D	DATE
6	FINAL RECORD DRAWING		25-NOV-2011
5	RECORD DRAWING		08-SEP-2011
4	REISSUED FOR CONSTRUCTION		04-FEB-2011
3	ISSUED FOR CONSTRUCTION		07-JAN-2011
2	REVISED AS PER HRM & HW COMMENTS		04-NOV-2010
1A	ISSUED TO CONTRACTOR		02-NOV-2010
1	REVISED AS PER HRM & HW COMMENTS		18-AUG-2010
0	ISSUED FOR REVIEW		30-APR-2010



DESIGN GRADES	0+260	0+280	0+300	0+320	0+340	0+360	0+380	0+400	0+420	0+440	0+460	0+480	0+500	0+520	0+540	0+560
SANITARY INVERT	97.640	100.500	100.540	104.300	104.380	105.960	106.050	107.510	107.580	108.380	108.420	104.920	104.730	104.500	104.500	95.360
SANITARY GRADE	43.412m± 250mmØ	50.669m± 250mmØ	37.897m± 250mmØ	38.279m± 250mmØ	51.818m± 250mmØ	68.742m± 200mmØ	80.801m± 250mmØ									
STORM GRADE	43.059m± 450mmØ	48.370m± 375mmØ	38.203m± 375mmØ	35.807m± 300mmØ	55.341m± 300mmØ	67.807m± 300mmØ	80.308m± 375mmØ									
STORM INVERT	97.300	100.490	100.540	104.400	104.500	106.290	106.390	107.540	107.690	108.350	108.470	104.880	104.500	104.500	104.500	95.020

GENIVAR
 1 SPECTACLE LAKE DRIVE
 DARTMOUTH, NOVA SCOTIA
 CANADA, B3B 1X7
 PHONE: 902 835-9955 - FAX: 902 835-1645
 WWW.GENIVAR.COM



CLIENT
NINE MILE RIVER INVESTMENTS LTD.
 HALIFAX, NOVA SCOTIA

PROJECT
BRUNELLO ESTATES PHASE 1
 TIMBERLEA, NOVA SCOTIA

SHEET DESCRIPTION
PLAN AND PROFILE
MAPLE GROVE AVENUE
 STA 0+260 TO 0+560

DATE: 30-APR-2010
 HORIZ. SCALE: 1:500
 VERT. SCALE: 1:50
 DRAWN: CMLUTZ
 CHECKED: LMACDONALD
 DWG. NO.: 009109-002_002

SHEET
3
 OF
26