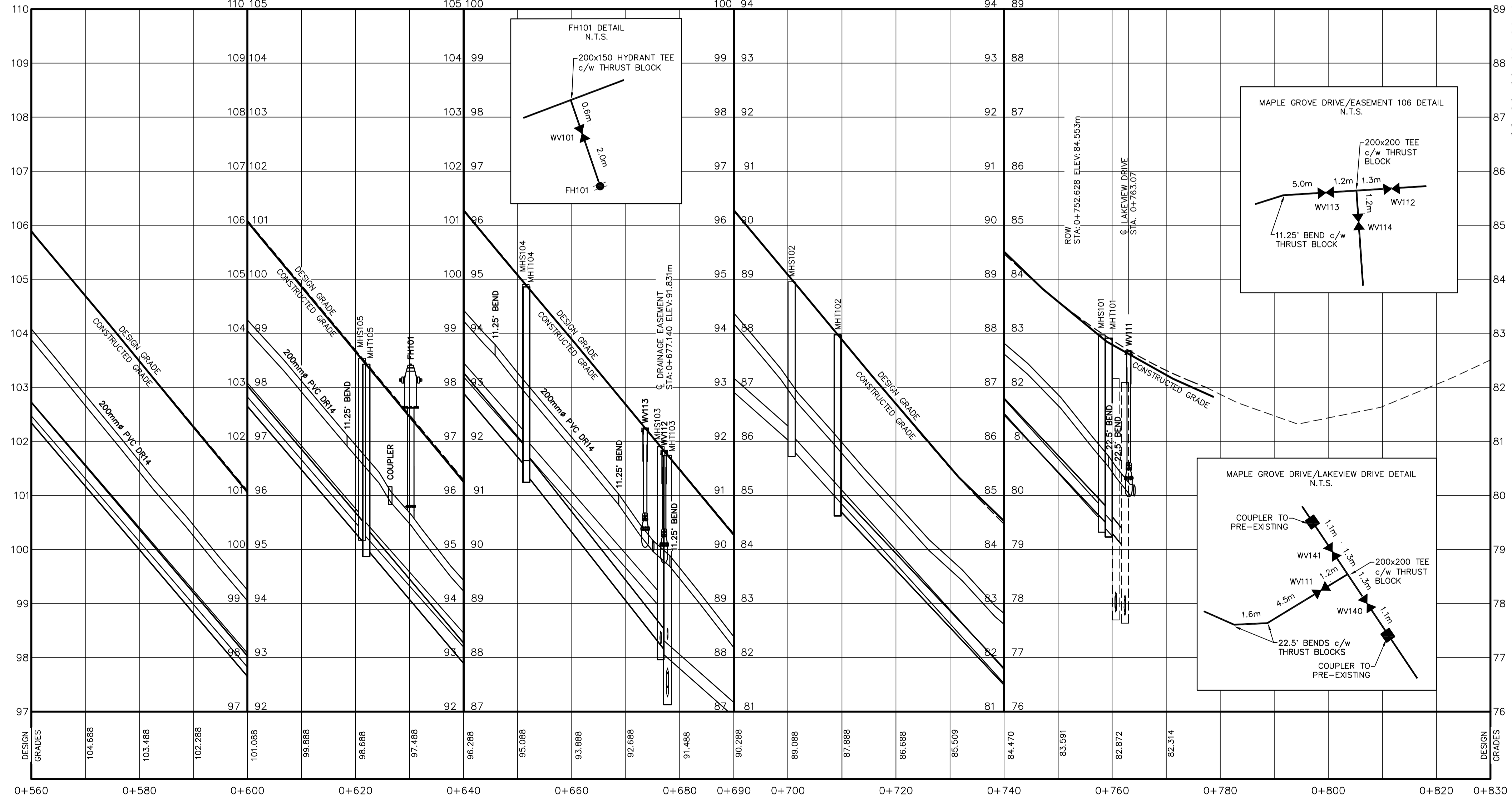


| CONSTRUCTED | | PRE-EXISTING | |
|-------------------------|---|------------------|---|
| WATERMAIN & GATE VALVE | — | EW - W3 | — |
| SANITARY MANHOLE & PIPE | — | ESAN - W3 | — |
| STORM MANHOLE & PIPE | — | ESTM - W3 | — |
| POWER/COMMUNICATIONS | — | EPH - W3 | — |
| EDGE OF PAVEMENT | — | — | — |
| LOTLINE | — | — | — |
| PROFILE GRADE | — | — | — |
| STREET BOUNDARY | — | SANITARY LATERAL | — |
| PROPERTY BOUNDARY | — | STORM LATERAL | — |
| FLOW DIRECTION ARROW | — | WATER LATERAL | — |
| DRIVEWAY CUT | — | CATCH BASIN LEAD | — |
| SWALE/DITCH | — | HEADWALL | — |
| CATCH BASIN | — | ENDCAP | — |
| ARV CHAMBER | — | LIGHT STANDARD | — |
| FIRE HYDRANT | — | ROAD SIGN | — |
| STREET TREE | — | ALIANT PEDESTAL | — |
| UTILITY POLE | — | NSP URD BOX | — |
| | | CULVERT | — |
| | | EASEMENT | — |
| | | SHOULDER | — |
| | | CURB | — |
| | | SIDEWALK | — |
| | | FENCE | — |



| NO. | DESCRIPTION | CHK'D | DATE |
|-----|----------------------------------|-------|-------------|
| 6 | FINAL RECORD DRAWING | | 25-NOV-2011 |
| 5 | RECORD DRAWING | | 08-SEP-2011 |
| 4 | REISSUED FOR CONSTRUCTION | | 04-FEB-2011 |
| 3 | ISSUED FOR CONSTRUCTION | | 07-JAN-2011 |
| 2 | REVISED AS PER HRM & HW COMMENTS | | 04-NOV-2010 |
| 1A | ISSUED TO CONTRACTOR | | 02-NOV-2010 |
| 1 | REVISED AS PER HRM & HW COMMENTS | | 18-AUG-2010 |
| 0 | ISSUED FOR REVIEW | | 30-APR-2010 |

CLIENT
NINE MILE RIVER INVESTMENTS LTD.
HALIFAX, NOVA SCOTIA

PROJECT
BRUNELLO ESTATES PHASE 1
TIMBERLEA, NOVA SCOTIA

SHEET DESCRIPTION
PLAN AND PROFILE
MAPLE GROVE AVENUE
STA 0+560 TO 0+830

| STATION | SANITARY INVERT | SANITARY GRADE | STORM GRADE | STORM INVERT |
|---------|-----------------|------------------|------------------|--------------|
| 0+560 | 104.730 | | | 104.500 |
| 0+580 | | 80.801m ± 250mm# | 80.308m ± 375mm# | |
| 0+600 | | | | |
| 0+620 | 96.360 | | | 95.070 |
| 0+640 | 91.900 | 30.161m ± 250mm# | 29.976m ± 375mm# | 91.520 |
| 0+660 | | 24.926m ± 250mm# | 26.490m ± 375mm# | |
| 0+680 | 88.070 | | | 88.070 |
| 0+700 | | 24.574m ± 250mm# | | |
| 0+720 | | | | |
| 0+740 | | 57.717m ± 250mm# | 50.185m ± 300mm# | |
| 0+760 | 79.530 | | 9.927m ± 300mm# | 79.440 |
| 0+780 | | | | |
| 0+800 | | 7.295m ± 250mm# | | |
| 0+820 | | | | |
| 0+830 | | | | |

DATE: 30-APR-2010
HORIZ. SCALE: 1:500
VERT. SCALE: 1:50
DRAWN: CMLUTZ
CHECKED: LMACDONALD
DWG. NO.: 009109-002_003

SHEET
4
OF
26