

**VALVE FIELD FORM** (Refer to Valve Attribute List for Coding Purposes)

Valve No. \_\_\_\_\_ W.O. \_\_\_\_\_

Location TIMBERLEA VILLAGE PARKWAY Intersecting Street ST. MARGARET'S BAY ROAD

Valve Size (mm) 400 Valve Key Number 3 Type BF4

Date Installed JUNE 2011 Valve Make MUELLER

Plat No. \_\_\_\_\_ Depth 2.7m Anode YES

Status \_\_\_\_\_ Set in BUFFALO BOX Close Direction R

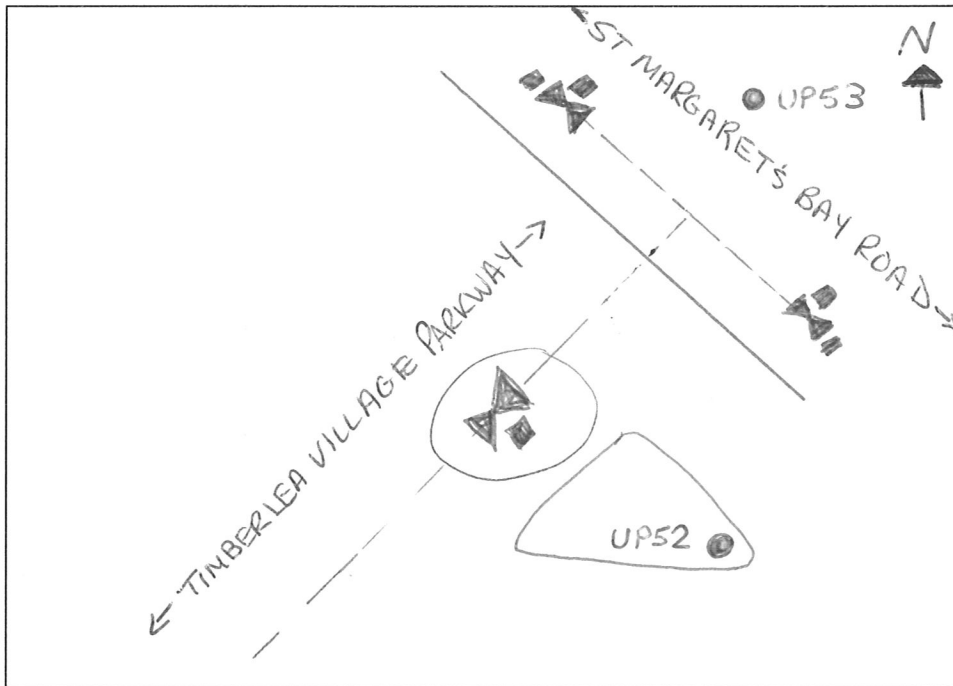
Number of Turns \_\_\_\_\_ Region \_\_\_\_\_ Pressure Zone \_\_\_\_\_

Ties to Valve (m): 1) UP52 = 19.2m  
2) UP53 = 6.1m

Remarks \_\_\_\_\_

Gray areas to be completed internally by HRWC Staff.

Sketch



\* See Valve Attribute List Page for a Listing of Field Values.

**VALVE FIELD FORM** (Refer to Valve Attribute List for Coding Purposes)

Valve No. \_\_\_\_\_ W.O. \_\_\_\_\_

Location ST. MARGARETS BAY ROAD Intersecting Street TIMBERLEA VILLAGE PARKWAY

Valve Size (mm) 400 Valve Key Number 3 Type BFY

Date Installed JUNE 2011 Valve Make MUELLER

Plat No. \_\_\_\_\_ Depth 2.7m Anode YES

Status \_\_\_\_\_ Set in BUFFALO BOX Close Direction R

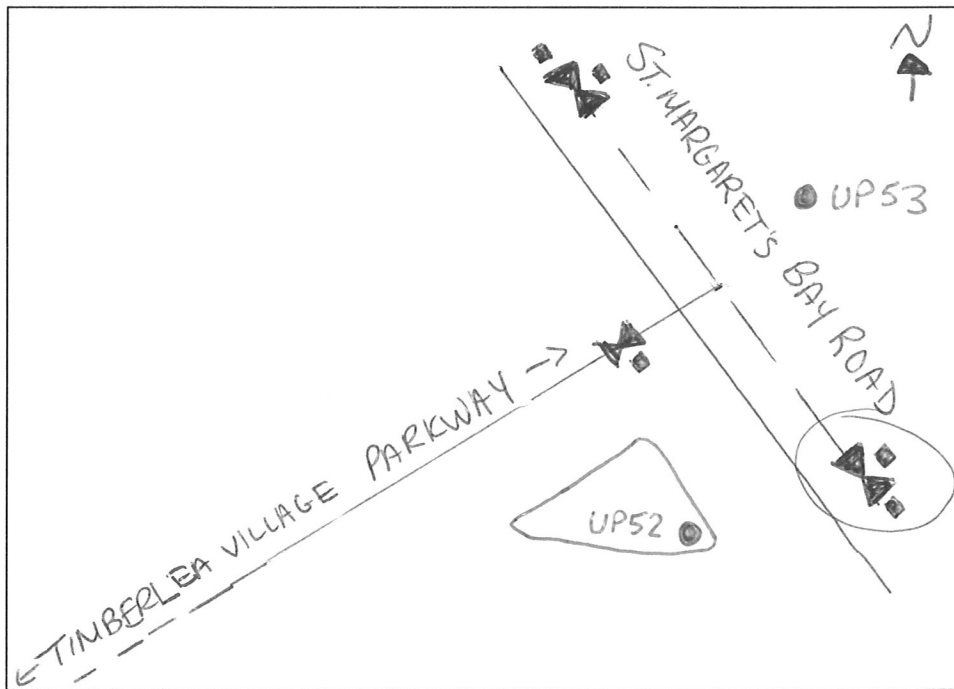
Number of Turns \_\_\_\_\_ Region \_\_\_\_\_ Pressure Zone \_\_\_\_\_

Ties to Valve (m): 1) UP52 = 20.3m  
2) UP53 = 4.7m

Remarks \_\_\_\_\_

Gray areas to be completed internally by HRWC Staff.

Sketch



\* See Valve Attribute List Page for a Listing of Field Values.

**VALVE FIELD FORM** (Refer to Valve Attribute List for Coding Purposes)

Valve No. \_\_\_\_\_ W.O. \_\_\_\_\_

Location ST. MARGARET'S BAY ROAD Intersecting Street TIMBERLEA VILLAGE PARKWAY

Valve Size (mm) 400 Valve Key Number 3 Type BFY -

Date Installed JUNE 2011 Valve Make MUELLER

Plat No. \_\_\_\_\_ Depth 2.7m Anode YES

Status \_\_\_\_\_ Set in BUFFALO BOX Close Direction R

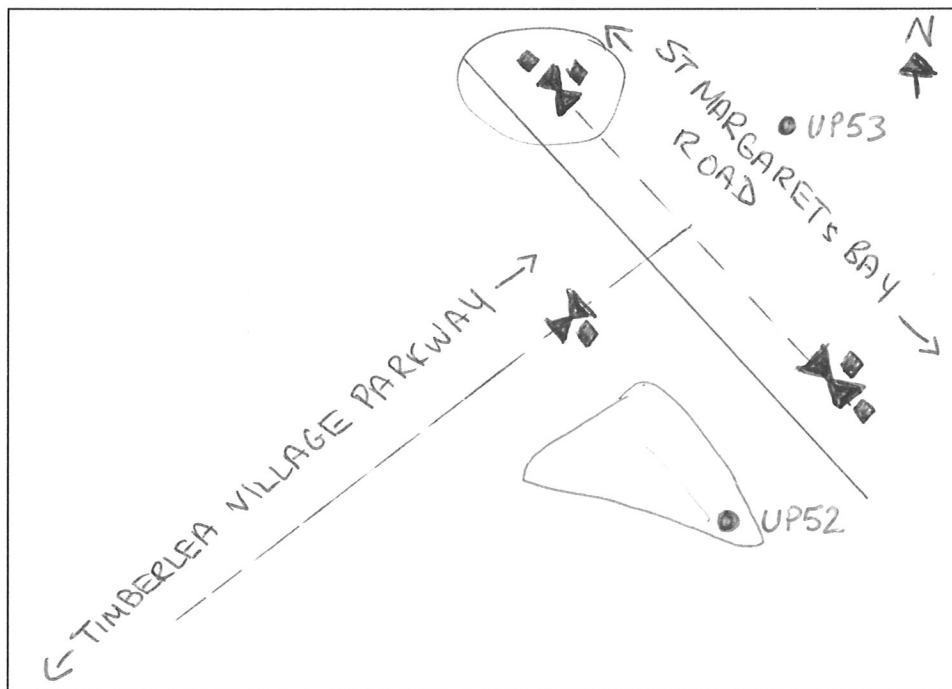
Number of Turns \_\_\_\_\_ Region \_\_\_\_\_ Pressure Zone \_\_\_\_\_

Ties to Valve (m): 1) UP52 = 21.4m  
2) UP53 = 4.4m

Remarks \_\_\_\_\_

\_\_\_\_\_ Gray areas to be completed internally by HRWC Staff.

Sketch



\* See Valve Attribute List Page for a Listing of Field Values.

**VALVE FIELD FORM** (Refer to Valve Attribute List for Coding Purposes)

Valve No. \_\_\_\_\_ W.O. \_\_\_\_\_

Location TIMBERLEA VILLAGE PARKWAY Intersecting Street \_\_\_\_\_

Valve Size (mm) 400 Valve Key Number 3 Type GATE

Date Installed JUNE 2011 Valve Make MUELLER

Plat No. \_\_\_\_\_ Depth 1.8m Anode YES

Status \_\_\_\_\_ Set in BUFFALO BOX Close Direction R

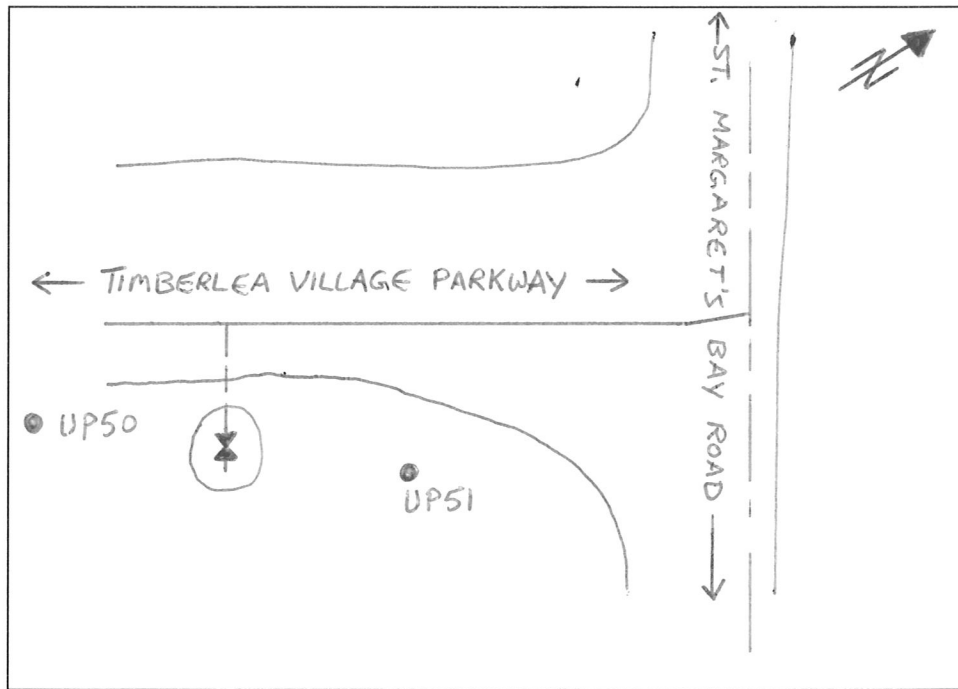
Number of Turns \_\_\_\_\_ Region \_\_\_\_\_ Pressure Zone \_\_\_\_\_

Ties to Valve (m): 1) UP50 = 34.6m  
2) UP51 = 7.1m

Remarks \_\_\_\_\_

       Gray areas to be completed internally by HRWC Staff.

Sketch



\* See Valve Attribute List Page for a Listing of Field Values.

**VALVE FIELD FORM** (Refer to Valve Attribute List for Coding Purposes)

Valve No.  W.O.

Location TIMBERLEA VILLAGE PARKWAY Intersecting Street

Valve Size (mm) 400 Valve Key Number 3 Type BFY

Date Installed JUNE 2011 Valve Make MUELLER

Plat No.  Depth 1.5m Anode YES

Status  Set in BUFFALO BOX Close Direction R

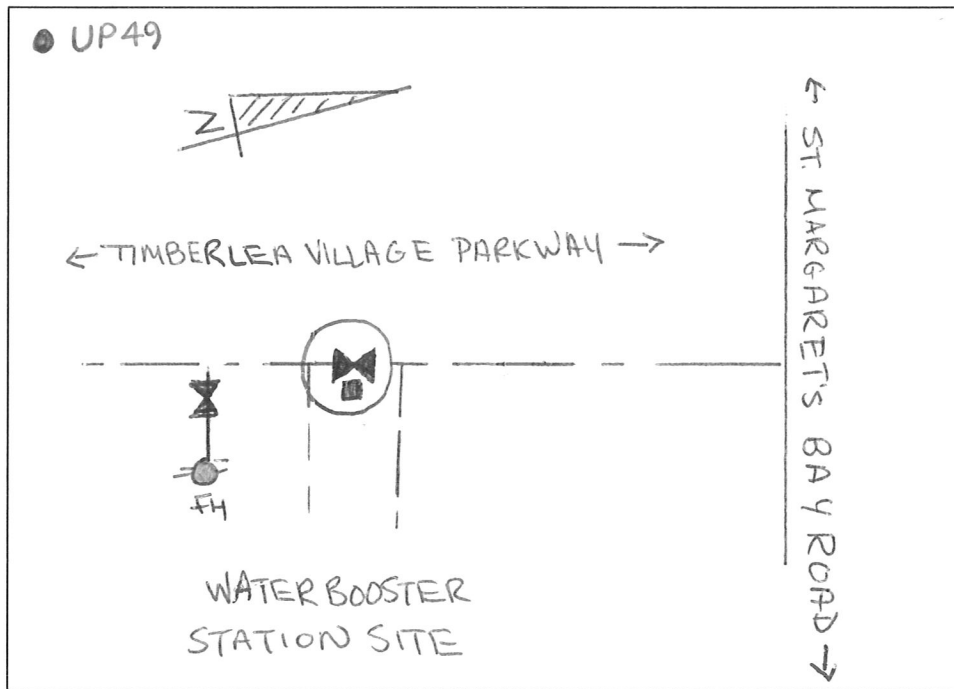
Number of Turns  Region  Pressure Zone

Ties to Valve (m): 1) UP49 = 23.1m  
2) FH = 5.8m

Remarks

Gray areas to be completed internally by HRWC Staff.

Sketch



\* See Valve Attribute List Page for a Listing of Field Values.

**VALVE FIELD FORM** (Refer to Valve Attribute List for Coding Purposes)

Valve No. \_\_\_\_\_ W.O. \_\_\_\_\_

Location TIMBERLEA VILLAGE PARKWAY Intersecting Street \_\_\_\_\_

Valve Size (mm) 350 Valve Key Number 3 Type BFY

Date Installed JUNE 2011 Valve Make MUELLER

Plat No. \_\_\_\_\_ Depth 1.6m Anode YES

Status \_\_\_\_\_ Set in BUFFALO BOX Close Direction R

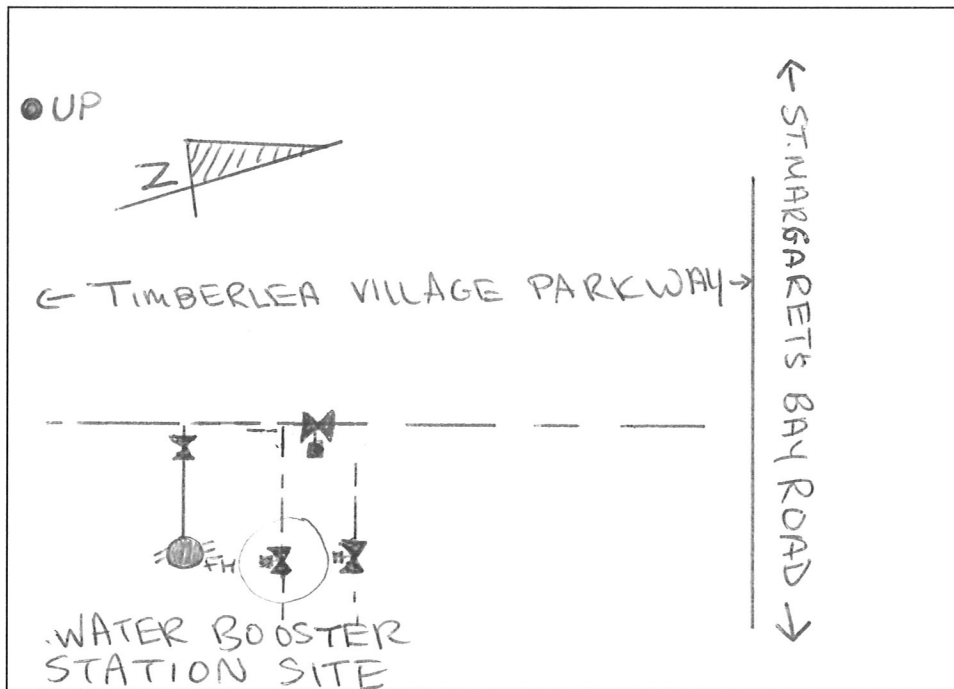
Number of Turns \_\_\_\_\_ Region \_\_\_\_\_ Pressure Zone \_\_\_\_\_

Ties to Valve (m): 1) UP = 22.4m  
2) FH = 4.5m

Remarks \_\_\_\_\_

Gray areas to be completed internally by HRWC Staff.

Sketch



\* See Valve Attribute List Page for a Listing of Field Values.

**VALVE FIELD FORM** (Refer to Valve Attribute List for Coding Purposes)

Valve No.  W.O.

Location TIMBERLEA VILLAGE PARKWAY Intersecting Street

Valve Size (mm) 350 Valve Key Number 3 Type BFY

Date Installed JUNE 2011 Valve Make MUELLER

Plat No.  Depth 1.6m Anode YES

Status  Set in BUFFALO BOX Close Direction R

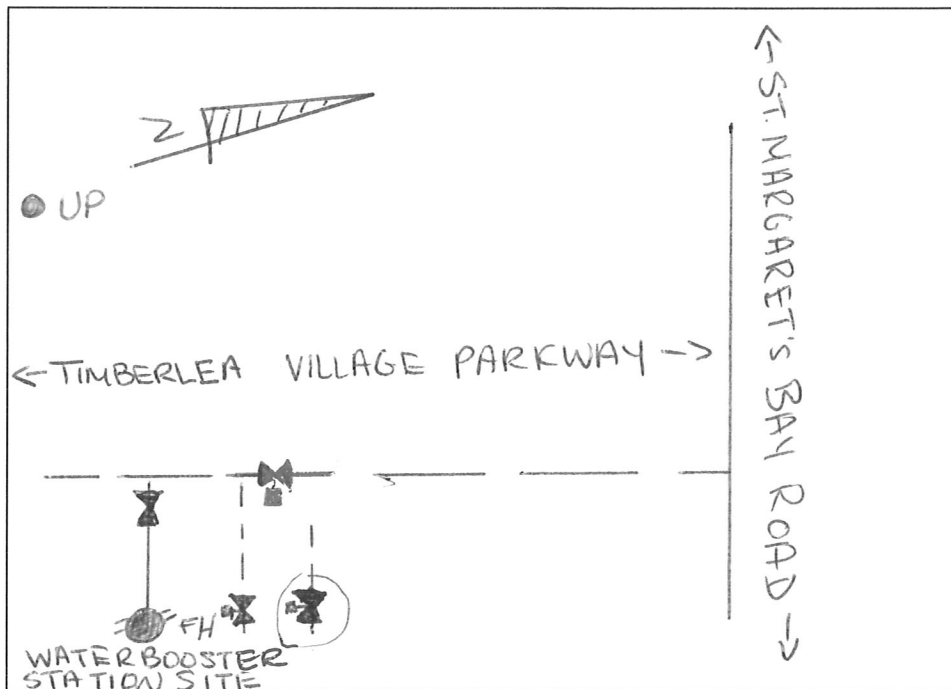
Number of Turns  Region  Pressure Zone

Ties to Valve (m): 1) UP = 24.4m  
2) FH = 6.0m

Remarks

Gray areas to be completed internally by HRWC Staff.

Sketch



\* See Valve Attribute List Page for a Listing of Field Values.





**HYDRANT FIELD FORM** (Refer to Hydrant Attribute List for Coding Purposes)

Hydrant No.  W.O.

Hydrant Location TIMBERLEA VILLAGE PARKWAY Static Pressure

Hydrant Type CENTURION Hyd to Valve (m) 5.5m

Date Branch Installed JUNE 2011 Water Main Size (mm) 400

Valve to Main (m) 0.6m Date Valve Installed JUNE 2011

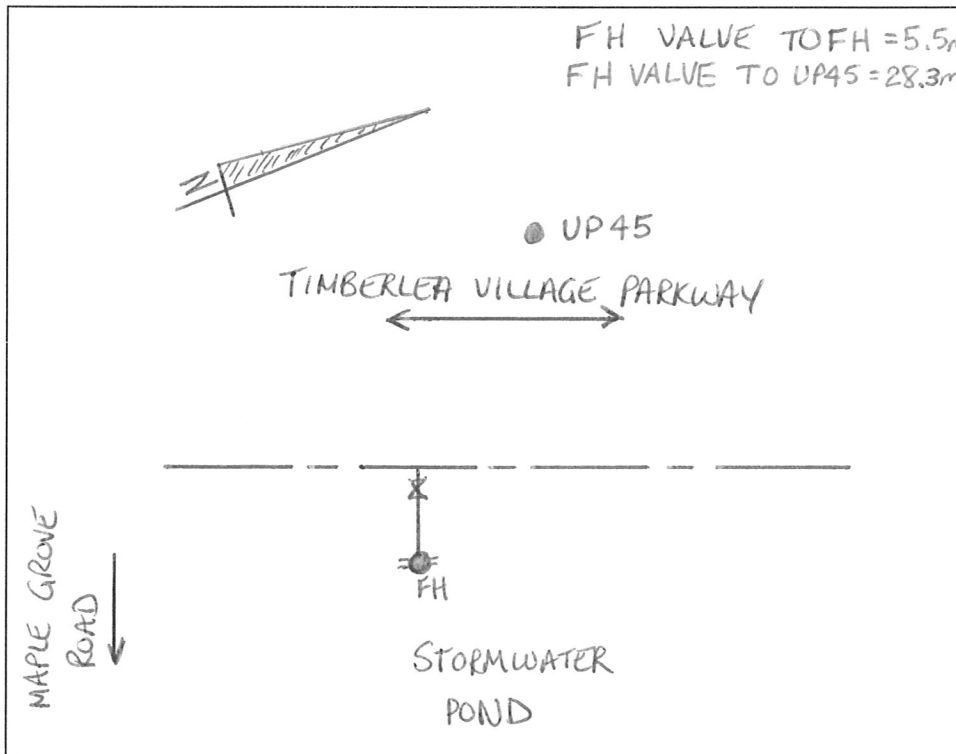
Date Hydrant Installed JUNE 2011 Depth (m) 1.8m Manufacturer MUELLER

Plat No.  Hydrant Connection RES-TEE Region

Remarks

Gray areas to be completed internally by HRWC Staff.

**Sketch**



\* See Hydrant Attribute List Page for a listing of Field Values.

**VALVE FIELD FORM** (Refer to Valve Attribute List for Coding Purposes)

Valve No. \_\_\_\_\_ W.O. \_\_\_\_\_

Location MAPEGROVE AVENUE Intersecting Street TIMBERLEA VILLAGE PARKWAY

Valve Size (mm) 250 Valve Key Number 3 Type GATE

Date Installed JUNE 2011 Valve Make MUELLER

Plat No. \_\_\_\_\_ Depth 2.0m Anode YES

Status \_\_\_\_\_ Set in BUFFALO BOX Close Direction R

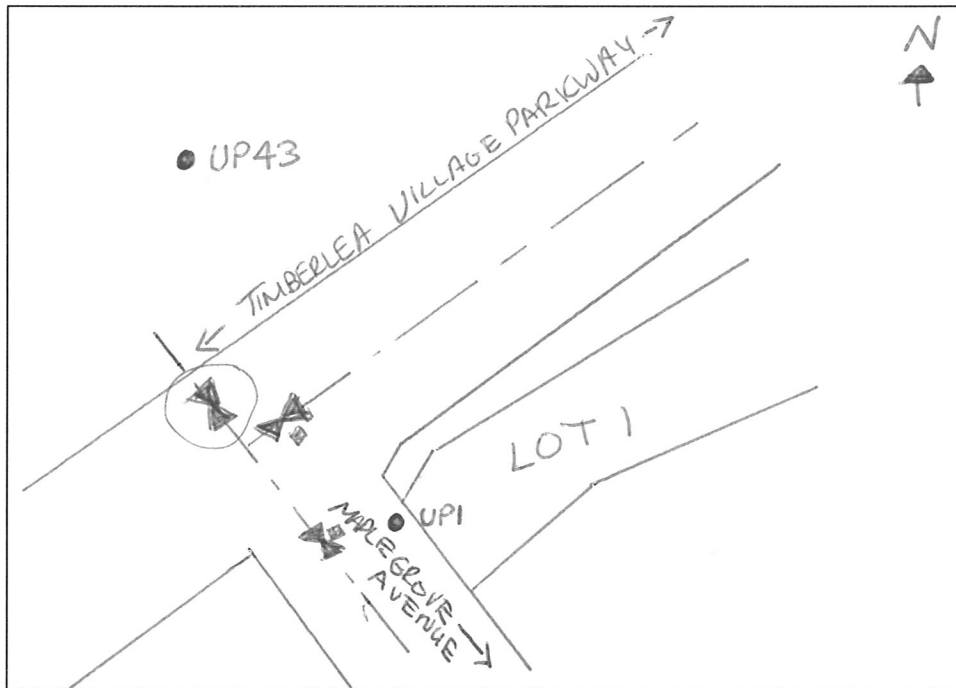
Number of Turns \_\_\_\_\_ Region \_\_\_\_\_ Pressure Zone \_\_\_\_\_

Ties to Valve (m): 1) UPI = 14.5m  
2) UP43 = 18.2m

Remarks \_\_\_\_\_

 Gray areas to be completed internally by HRWC Staff.

Sketch



\* See Valve Attribute List Page for a Listing of Field Values.

**VALVE FIELD FORM** (Refer to Valve Attribute List for Coding Purposes)

Valve No. \_\_\_\_\_ W.O. \_\_\_\_\_

Location TIMBERLEA VILLAGE PARKWAY Intersecting Street MAPLE GROVE AVENUE

Valve Size (mm) 400 Valve Key Number 3 Type BFY

Date Installed JUNE 2011 Valve Make MUELLER

Plat No. \_\_\_\_\_ Depth 1.8 m Anode YES

Status \_\_\_\_\_ Set in BUFFALO BOX Close Direction R

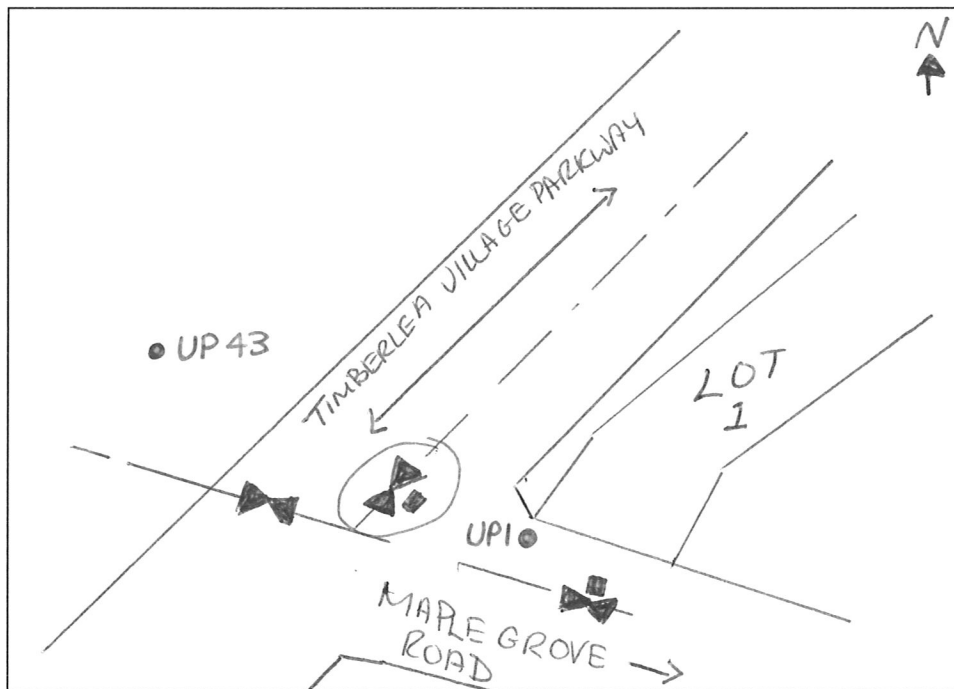
Number of Turns \_\_\_\_\_ Region \_\_\_\_\_ Pressure Zone \_\_\_\_\_

Ties to Valve (m): 1) UPI = 11.3m  
2) UP43 = 20.8m

Remarks \_\_\_\_\_

Gray areas to be completed internally by HRWC Staff.

Sketch



\* See Valve Attribute List Page for a Listing of Field Values.

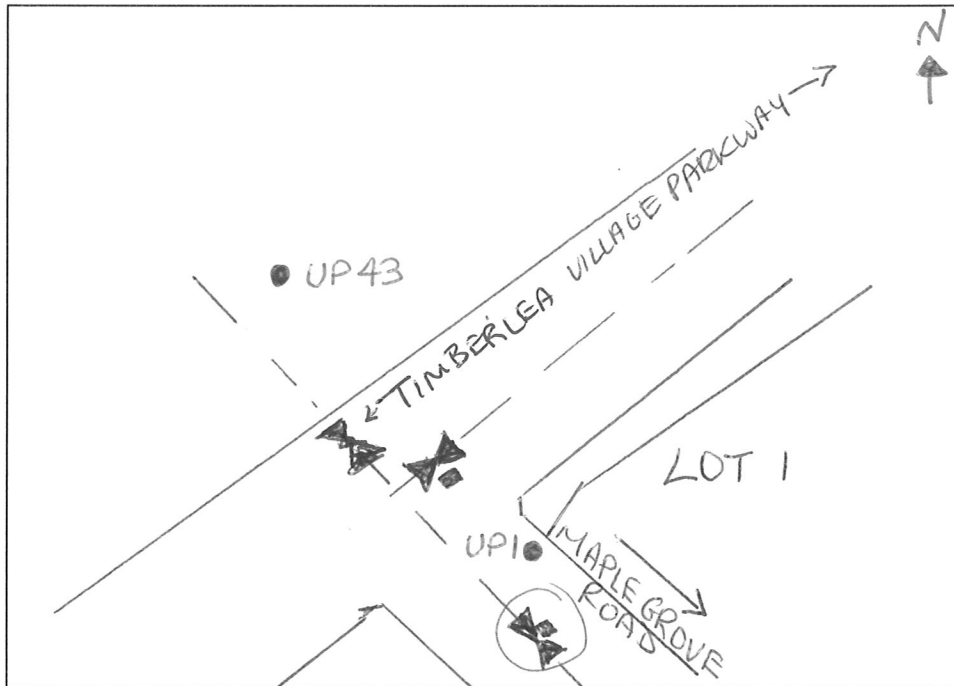
**VALVE FIELD FORM** (Refer to Valve Attribute List for Coding Purposes)

Valve No. \_\_\_\_\_ W.O. \_\_\_\_\_  
 Location MAPLE GROVE AVENUE Intersecting Street TIMBERLEA VILLAGE PARKWAY  
 Valve Size (mm) 400 Valve Key Number 3 Type BF4  
 Date Installed JUNE 2011 Valve Make MUELLER  
 Plat No. \_\_\_\_\_ Depth 1.8m Anode YES  
 Status \_\_\_\_\_ Set in BUFFALO BOX Close Direction R  
 Number of Turns \_\_\_\_\_ Region \_\_\_\_\_ Pressure Zone \_\_\_\_\_  
 Ties to Valve (m): 1) UPI = 6.1m  
 2) UP43 = 28.2m

Remarks \_\_\_\_\_

\_\_\_\_\_ Gray areas to be completed internally by HRWC Staff.

Sketch



\* See Valve Attribute List Page for a Listing of Field Values.

**HYDRANT FIELD FORM** (Refer to Hydrant Attribute List for Coding Purposes)

Hydrant No. \_\_\_\_\_ W.O. \_\_\_\_\_

Hydrant Location MAPLE GROVE AVENUE Static Pressure \_\_\_\_\_

Hydrant Type CENTURION Hyd to Valve (m) 2.7m

Date Branch Installed JUNE 2011 Water Main Size (mm) 400

Valve to Main (m) 0.6m Date Valve Installed JUNE 2011

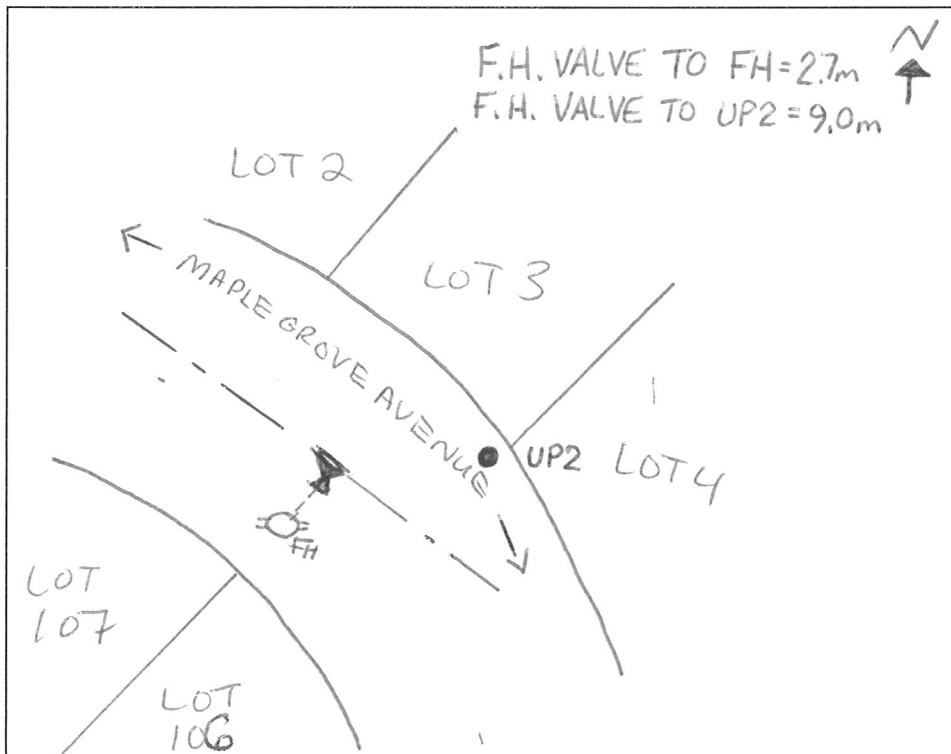
Date Hydrant Installed JUNE 2011 Depth (m) 1.8m Manufacturer MUELLER

Plat No. \_\_\_\_\_ Hydrant Connection RES-TEE Region \_\_\_\_\_

Remarks \_\_\_\_\_

 Gray areas to be completed internally by HRWC Staff.

Sketch



\* See Hydrant Attribute List Page for a listing of Field Values.

**VALVE FIELD FORM** (Refer to Valve Attribute List for Coding Purposes)

Valve No. \_\_\_\_\_ W.O. \_\_\_\_\_

Location MAPLE GROVE AVENUE Intersecting Street MERLOT COURT

Valve Size (mm) 400 Valve Key Number 3 Type BFY

Date Installed JUNE 2011 Valve Make MUELLER

Plat No. \_\_\_\_\_ Depth 1.8m Anode YES

Status \_\_\_\_\_ Set in BUFFALO BOX Close Direction R

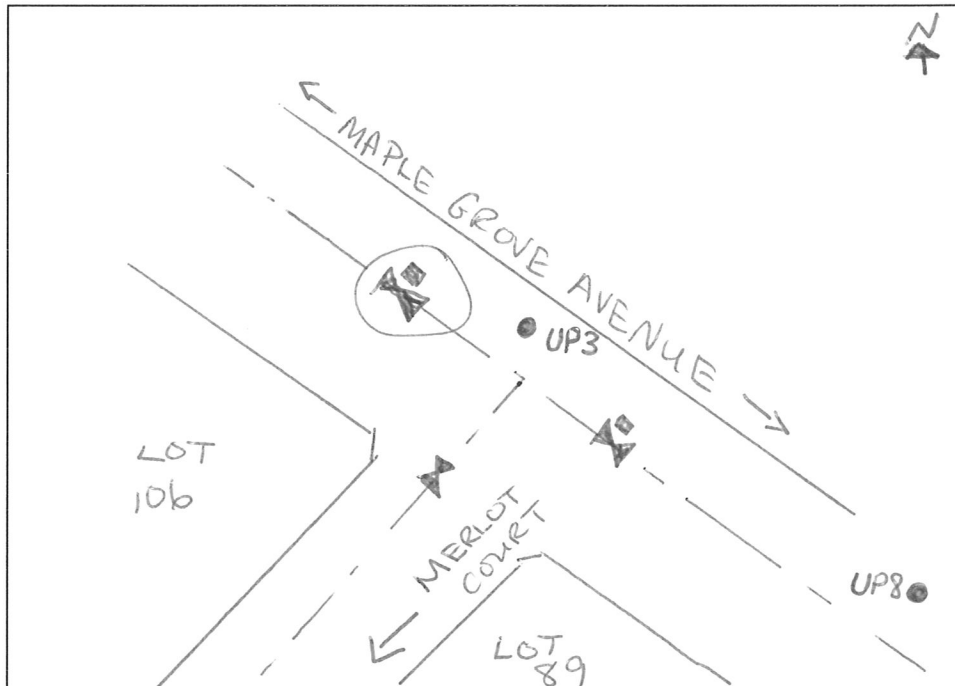
Number of Turns \_\_\_\_\_ Region \_\_\_\_\_ Pressure Zone \_\_\_\_\_

Ties to Valve (m): 1) UP3 = 8.5m  
2) UP8 = 35.0m

Remarks \_\_\_\_\_

       Gray areas to be completed internally by HRWC Staff.

Sketch



\* See Valve Attribute List Page for a Listing of Field Values.

**VALVE FIELD FORM** (Refer to Valve Attribute List for Coding Purposes)

Valve No. \_\_\_\_\_ W.O. \_\_\_\_\_

Location MAPLE GROVE AVENUE Intersecting Street MERLOT COURT

Valve Size (mm) 400 Valve Key Number 3 Type BFY

Date Installed JUNE 2011 Valve Make MUELLER

Plat No. \_\_\_\_\_ Depth 1.8m Anode YES

Status \_\_\_\_\_ Set in BUFFALO BOX Close Direction R

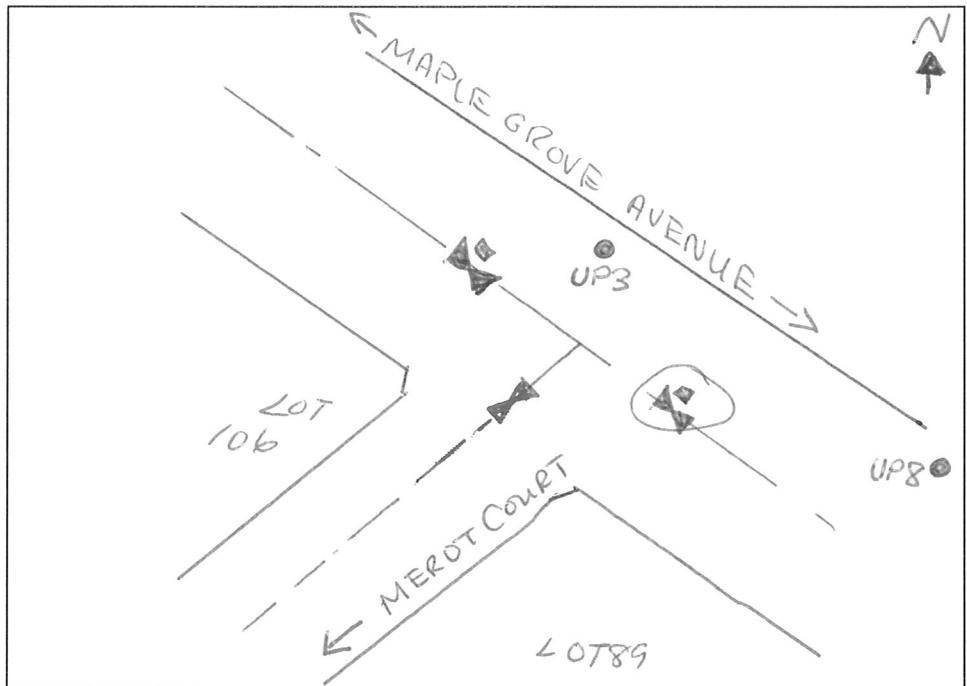
Number of Turns \_\_\_\_\_ Region \_\_\_\_\_ Pressure Zone \_\_\_\_\_

Ties to Valve (m): 1) UP3 = 8.6m  
2) UP8 = 32.7m

Remarks \_\_\_\_\_

       Gray areas to be completed internally by HRWC Staff.

Sketch



\* See Valve Attribute List Page for a Listing of Field Values.

**VALVE FIELD FORM** (Refer to Valve Attribute List for Coding Purposes)

Valve No. \_\_\_\_\_ W.O. \_\_\_\_\_

Location MERLOT COURT Intersecting Street MAPLE GROVE AVENUE

Valve Size (mm) 200 Valve Key Number 3 Type GATE

Date Installed JUNE 2011 Valve Make MUELLER

Plat No. \_\_\_\_\_ Depth 1.7 m Anode YES

Status \_\_\_\_\_ Set in BUFFALO BOX Close Direction R

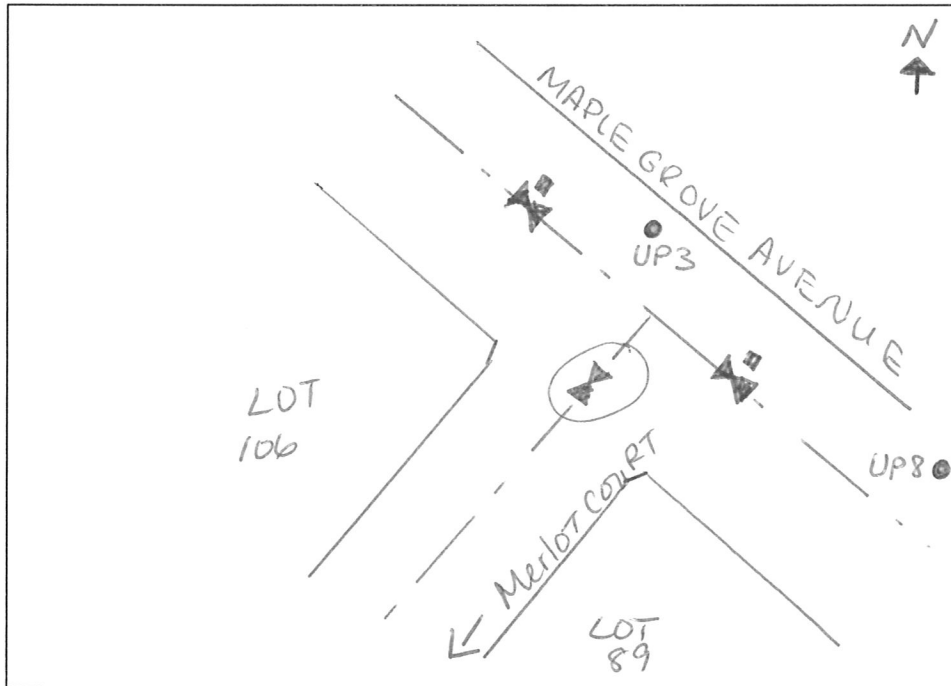
Number of Turns \_\_\_\_\_ Region \_\_\_\_\_ Pressure Zone \_\_\_\_\_

Ties to Valve (m): 1) UP3 = 10.1 m  
2) UP8 = 34.3 m

Remarks \_\_\_\_\_

Gray areas to be completed internally by HRWC Staff.

Sketch



\* See Valve Attribute List Page for a Listing of Field Values.



**HYDRANT FIELD FORM** (Refer to Hydrant Attribute List for Coding Purposes)

Hydrant No.  W.O.

Hydrant Location MERLOT COURT Static Pressure

Hydrant Type CENTURION Hyd to Valve (m) 3.1 m

Date Branch Installed JUNE 2011 Water Main Size (mm) 200

Valve to Main (m) N/A Date Valve Installed JUNE 2011

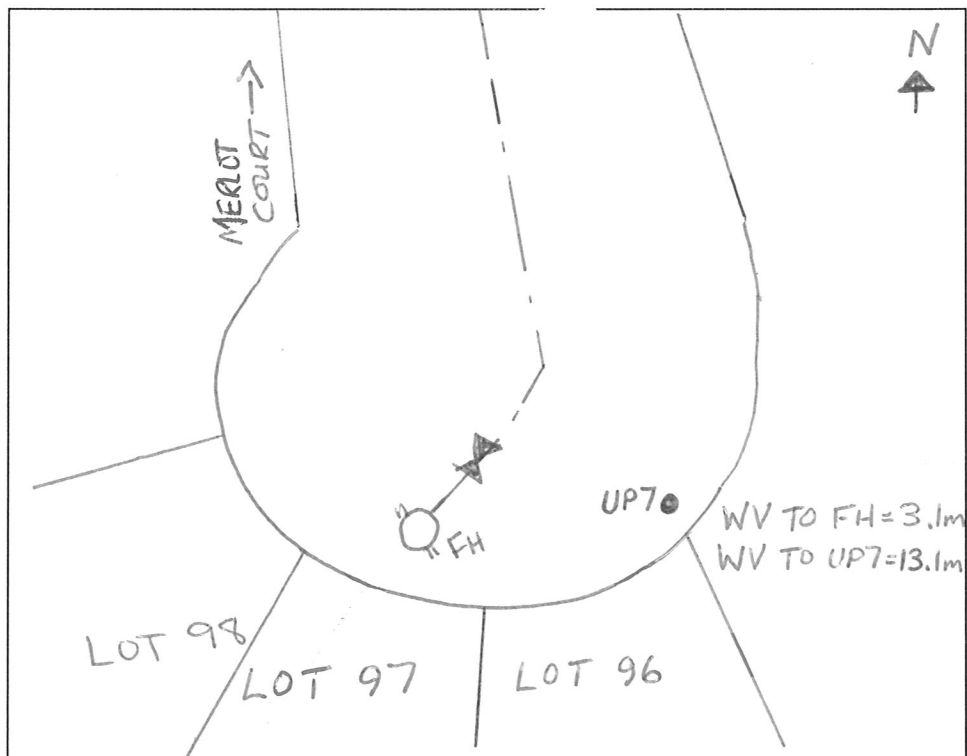
Date Hydrant Installed JUNE 2011 Depth (m) 1.9m Manufacturer MUELLER

Plat No.  Hydrant Connection RES-TEE Region

Remarks \_\_\_\_\_

Gray areas to be completed internally by HRWC Staff.

Sketch



\* See Hydrant Attribute List Page for a listing of Field Values.

**VALVE FIELD FORM** (Refer to Valve Attribute List for Coding Purposes)

Valve No. \_\_\_\_\_ W.O. \_\_\_\_\_

Location MAPLE GROVE AVENUE Intersecting Street AVIGNON LANE

Valve Size (mm) 400 Valve Key Number 3 Type BFY

Date Installed JUNE 2011 Valve Make MUELLER

Plat No. \_\_\_\_\_ Depth 1.8m Anode YES

Status \_\_\_\_\_ Set in BUFFALO BOX Close Direction R

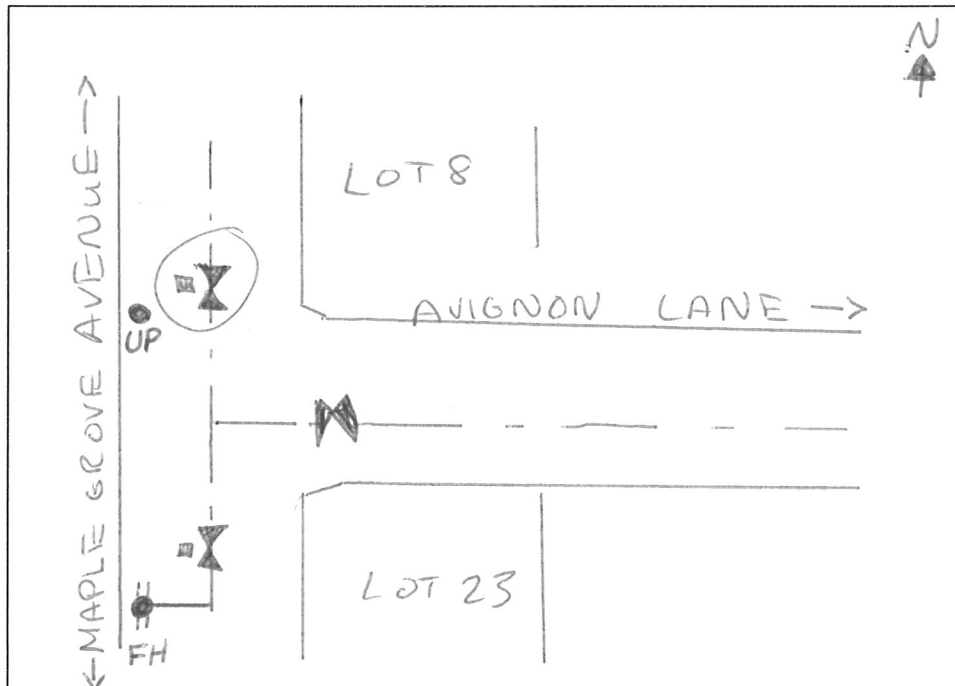
Number of Turns \_\_\_\_\_ Region \_\_\_\_\_ Pressure Zone \_\_\_\_\_

Ties to Valve (m): 1) UP = 5.1m  
2) FH = 26.0m

Remarks \_\_\_\_\_

Gray areas to be completed internally by HRWC Staff.

Sketch



\* See Valve Attribute List Page for a Listing of Field Values.

**VALVE FIELD FORM** (Refer to Valve Attribute List for Coding Purposes)

Valve No. \_\_\_\_\_ W.O. \_\_\_\_\_

Location AVIGNON LANE Intersecting Street MAPLE GROVE AVENUE

Valve Size (mm) 200 Valve Key Number 3 Type GATE

Date Installed JUNE 2011 Valve Make MUELLER

Plat No. \_\_\_\_\_ Depth 1.9 m Anode YES

Status \_\_\_\_\_ Set in BUFFALO BOX Close Direction R

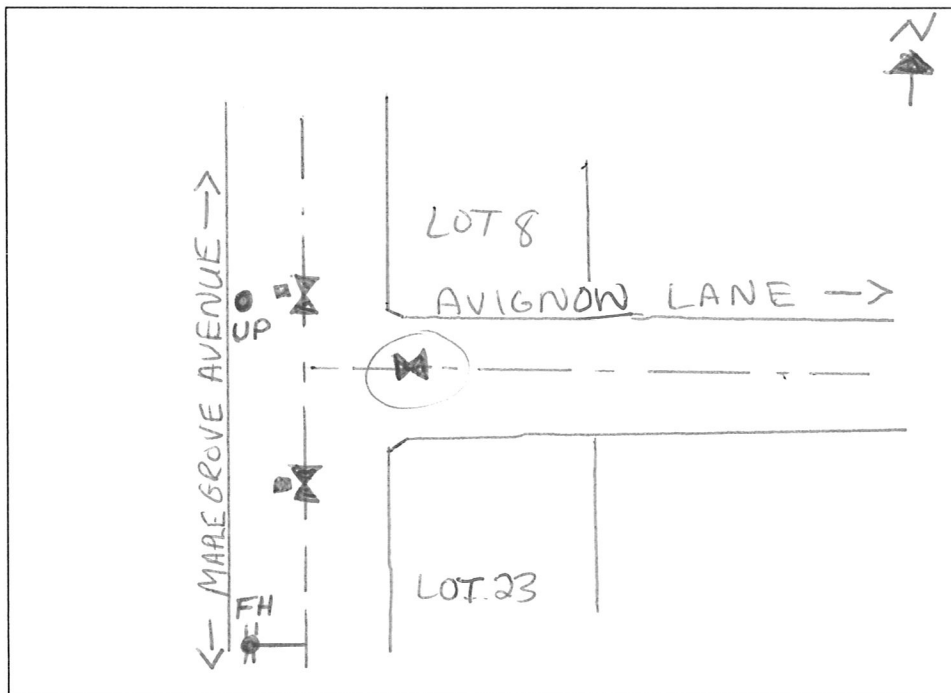
Number of Turns \_\_\_\_\_ Region \_\_\_\_\_ Pressure Zone \_\_\_\_\_

Ties to Valve (m): 1) UP = 7.1m  
2) FH = 25.2m

Remarks \_\_\_\_\_

       Gray areas to be completed internally by HRWC Staff.

Sketch



\* See Valve Attribute List Page for a Listing of Field Values.

**VALVE FIELD FORM** (Refer to Valve Attribute List for Coding Purposes)

Valve No. \_\_\_\_\_ W.O. \_\_\_\_\_

Location MAPLE GROVE AVENUE Intersecting Street AVIGNON LANE

Valve Size (mm) 400 Valve Key Number 3 Type BFY

Date Installed JUNE 2011 Valve Make MUELLER

Plat No. \_\_\_\_\_ Depth 1.8m Anode YES

Status \_\_\_\_\_ Set in BUFFALO BOX Close Direction R

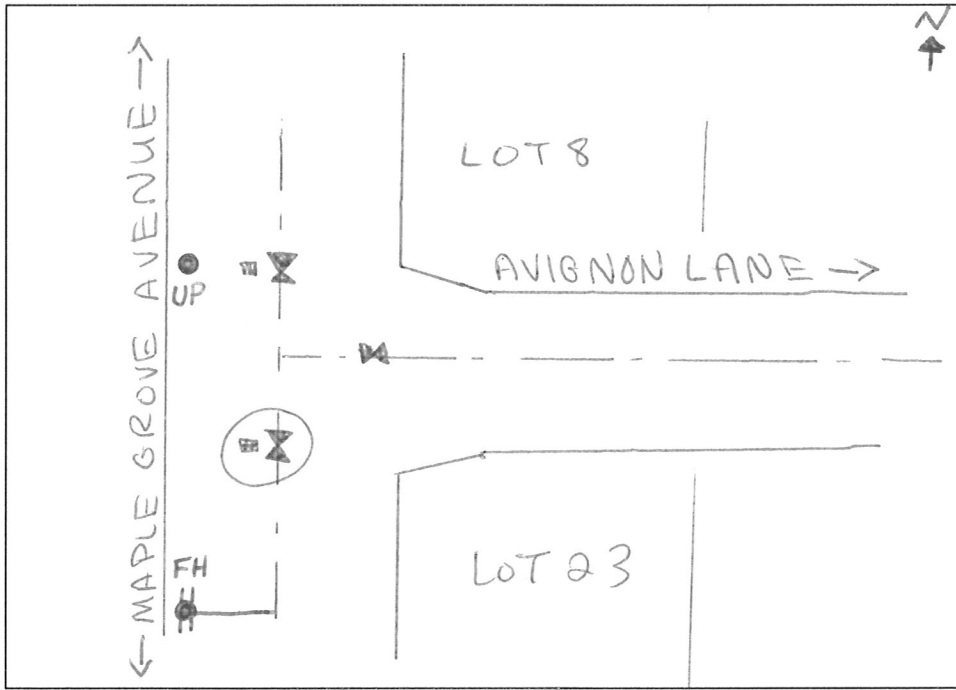
Number of Turns \_\_\_\_\_ Region \_\_\_\_\_ Pressure Zone \_\_\_\_\_

Ties to Valve (m): 1) UP = 7.2m  
2) FH = 23.7m

Remarks \_\_\_\_\_

       Gray areas to be completed internally by HRWC Staff.

Sketch



\* See Valve Attribute List Page for a Listing of Field Values.

**HYDRANT FIELD FORM** (Refer to Hydrant Attribute List for Coding Purposes)

Hydrant No.                      W.O.                     

Hydrant Location AVIGNON LANE Static Pressure                     

Hydrant Type CENTURION Hyd to Valve (m) 3.2 m

Date Branch Installed JUNE 2011 Water Main Size (mm) 200

Valve to Main (m) N/A Date Valve Installed JUNE 2011

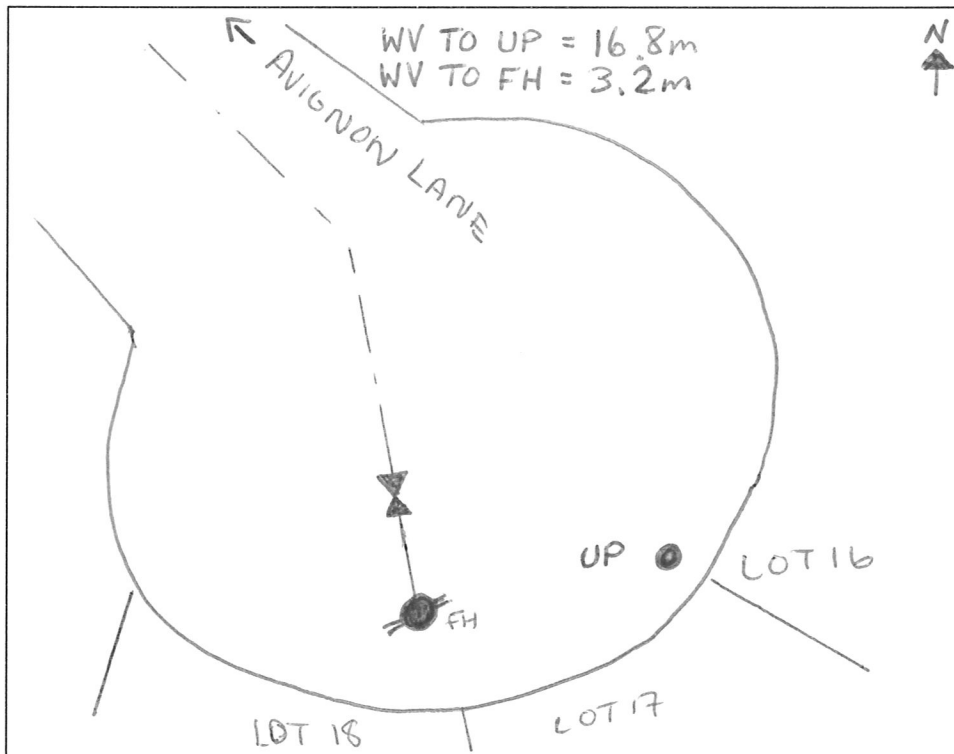
Date Hydrant Installed JUNE 2011 Depth (m) 1.6 m Manufacturer MUELLER

Plat No.                      Hydrant Connection RES-TEE Region                     

Remarks                     

                     Gray areas to be completed internally by HRWC Staff.

**Sketch**



\* See Hydrant Attribute List Page for a listing of Field Values.





**VALVE FIELD FORM** (Refer to Valve Attribute List for Coding Purposes)

Valve No. \_\_\_\_\_ W.O. \_\_\_\_\_

Location MAPLE GROVE AVENUE Intersecting Street AMALFI WAY

Valve Size (mm) 400 Valve Key Number 3 Type BFY

Date Installed JUNE 2011 Valve Make MUELLER

Plat No. \_\_\_\_\_ Depth 1.8m Anode YES

Status \_\_\_\_\_ Set in BUFFALO BOX Close Direction R

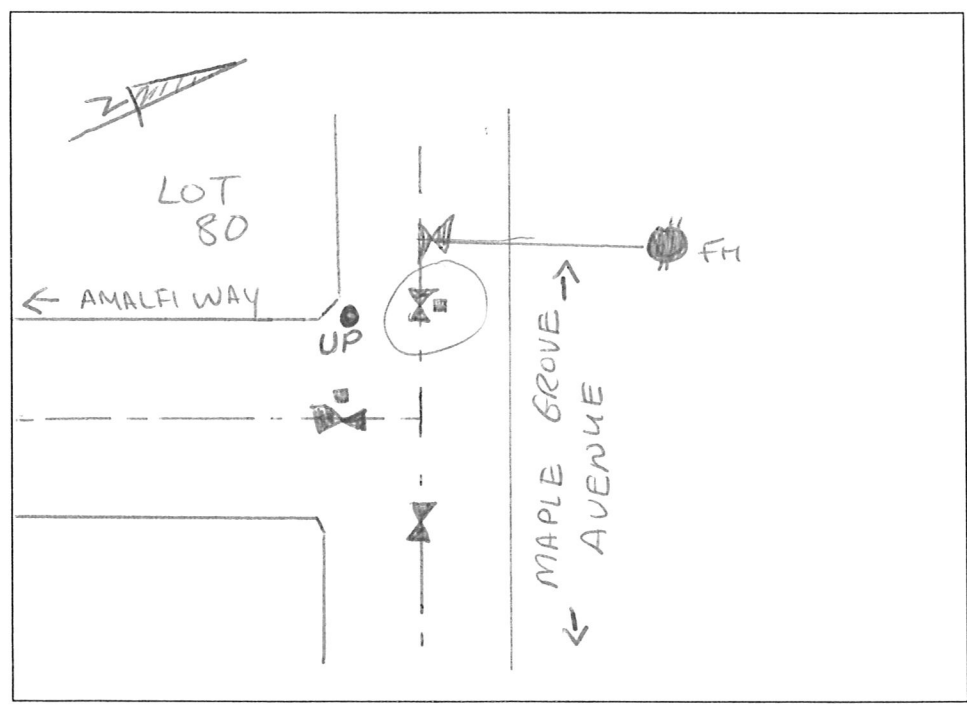
Number of Turns \_\_\_\_\_ Region \_\_\_\_\_ Pressure Zone \_\_\_\_\_

Ties to Valve (m): 1) UP = 8.9m  
2) FH = 7.2m

Remarks \_\_\_\_\_

 Gray areas to be completed internally by HRWC Staff.

Sketch



\* See Valve Attribute List Page for a Listing of Field Values.



**VALVE FIELD FORM** (Refer to Valve Attribute List for Coding Purposes)

Valve No. \_\_\_\_\_ W.O. \_\_\_\_\_

Location AMALFI WAY Intersecting Street MAPLE GROVE AVENUE

Valve Size (mm) 400 Valve Key Number 3 Type BF4

Date Installed JUNE 2011 Valve Make MUELLER


Plat No. \_\_\_\_\_ Depth 1.7m Anode YES

Status \_\_\_\_\_ Set in BUFFALO BOX Close Direction R

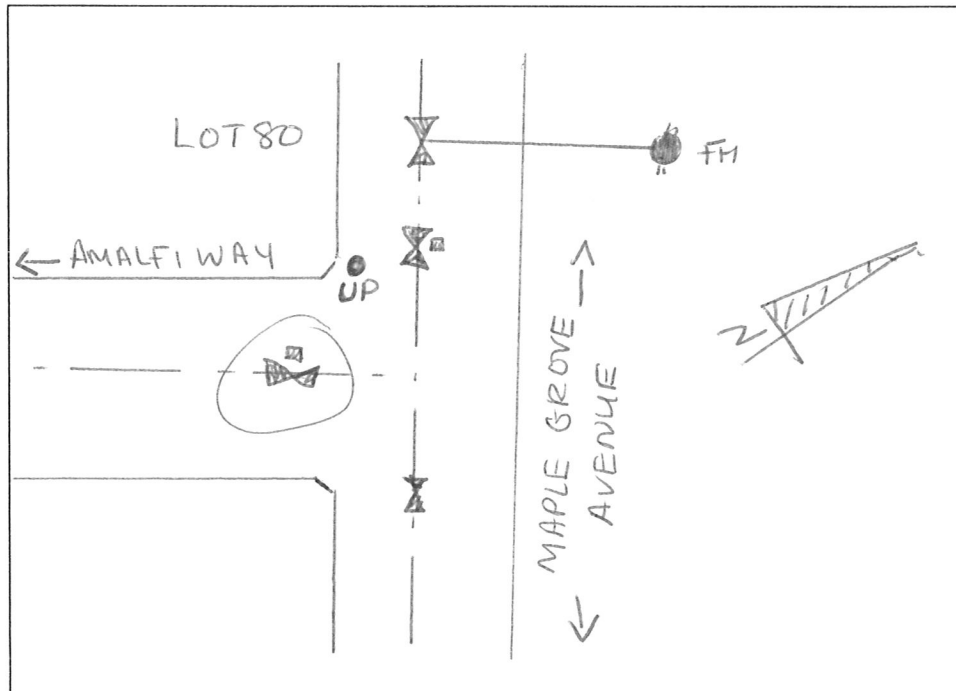
Number of Turns \_\_\_\_\_ Region \_\_\_\_\_ Pressure Zone \_\_\_\_\_

Ties to Valve (m): 1) UP = 9.2m  
2) FH = 8.9m

Remarks \_\_\_\_\_

 Gray areas to be completed internally by HRWC Staff.

Sketch



\* See Valve Attribute List Page for a Listing of Field Values.

**VALVE FIELD FORM** (Refer to Valve Attribute List for Coding Purposes)

Valve No. \_\_\_\_\_ W.O. \_\_\_\_\_

Location MAPEGROVE AVENUE Intersecting Street AMALFI WAY

Valve Size (mm) 300 Valve Key Number 3 Type GATE

Date Installed JUNE 2011 Valve Make MUELLER

Plat No. \_\_\_\_\_ Depth 1.8 m Anode YES

Status \_\_\_\_\_ Set in BUFFALO BOX Close Direction R

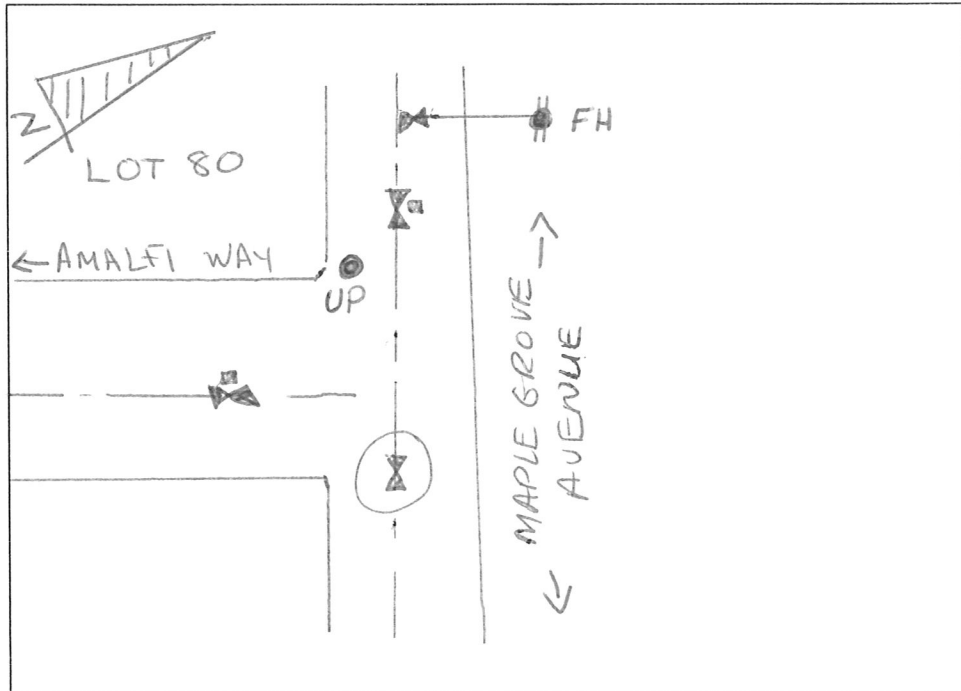
Number of Turns \_\_\_\_\_ Region \_\_\_\_\_ Pressure Zone \_\_\_\_\_

Ties to Valve (m): 1) UP = 12.3m  
2) FH = 9.0m

Remarks \_\_\_\_\_

       Gray areas to be completed internally by HRWC Staff.

Sketch



\* See Valve Attribute List Page for a Listing of Field Values.



**VALVE FIELD FORM** (Refer to Valve Attribute List for Coding Purposes)

Valve No. \_\_\_\_\_ W.O. \_\_\_\_\_

Location MAPLE GROVE AVENUE Intersecting Street \_\_\_\_\_

Valve Size (mm) 200 Valve Key Number 3 Type GATE

Date Installed JUNE 2011 Valve Make MUELLER

Plat No. \_\_\_\_\_ Depth 1.7m Anode YES

Status \_\_\_\_\_ Set in BUFFALO BOX Close Direction R

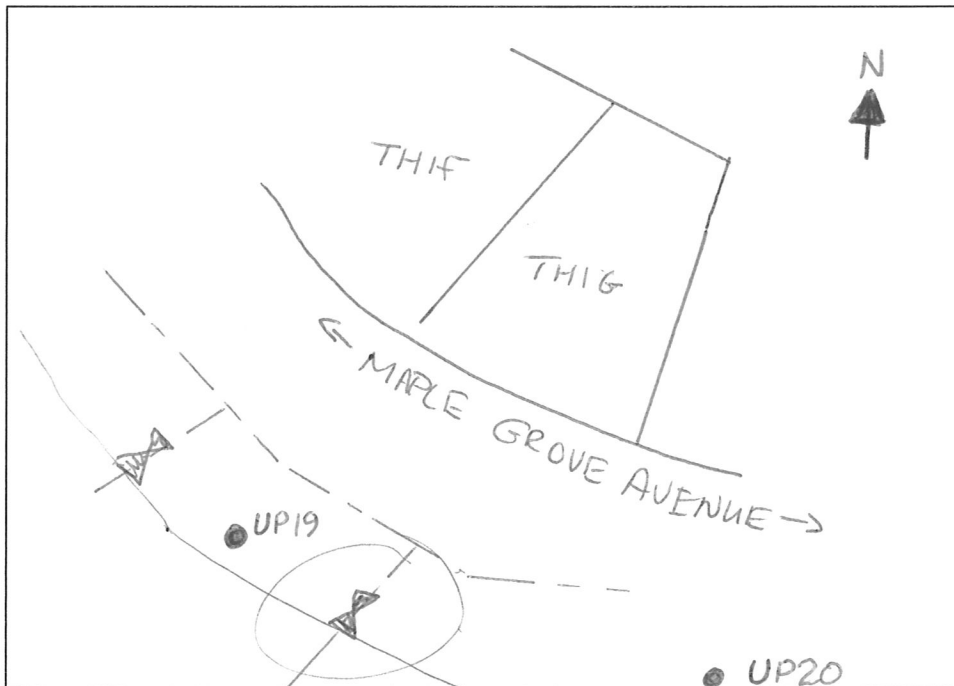
Number of Turns \_\_\_\_\_ Region \_\_\_\_\_ Pressure Zone \_\_\_\_\_

Ties to Valve (m): 1) UP19 = 4.8m  
2) UP20 = 18.3m

Remarks \_\_\_\_\_

       Gray areas to be completed internally by HRWC Staff.

Sketch



\* See Valve Attribute List Page for a Listing of Field Values.

**VALVE FIELD FORM** (Refer to Valve Attribute List for Coding Purposes)

Valve No. \_\_\_\_\_ W.O. \_\_\_\_\_

Location MAPLE GROVE AVENUE Intersecting Street \_\_\_\_\_

Valve Size (mm) 200 Valve Key Number 3 Type GATE

Date Installed JUNE 2011 Valve Make MUELLER

Plat No. \_\_\_\_\_ Depth 1.7m Anode YES

Status \_\_\_\_\_ Set in BUFFALO BOX Close Direction R

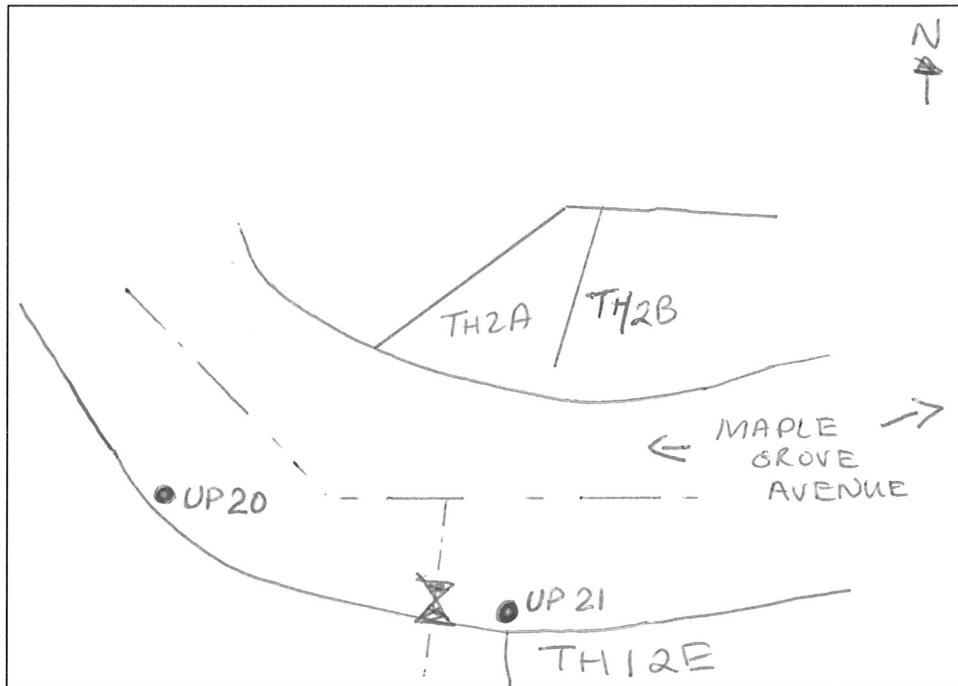
Number of Turns \_\_\_\_\_ Region \_\_\_\_\_ Pressure Zone \_\_\_\_\_

Ties to Valve (m): 1) UP20 = 17.8m  
2) UP21 = 5.2m

Remarks \_\_\_\_\_

\_\_\_\_\_ Gray areas to be completed internally by HRWC Staff.

Sketch



\* See Valve Attribute List Page for a Listing of Field Values.



**VALVE FIELD FORM** (Refer to Valve Attribute List for Coding Purposes)

Valve No. \_\_\_\_\_ W.O. \_\_\_\_\_

Location MAPLE GROVE AVENUE Intersecting Street N/A

Valve Size (mm) 250 Valve Key Number \_\_\_\_\_ Type ARV

Date Installed JUNE 2011 Valve Make BERMAD

Plat No. \_\_\_\_\_ Depth 1.8m Anode \_\_\_\_\_

Status \_\_\_\_\_ Set in CHAMBER Close Direction \_\_\_\_\_

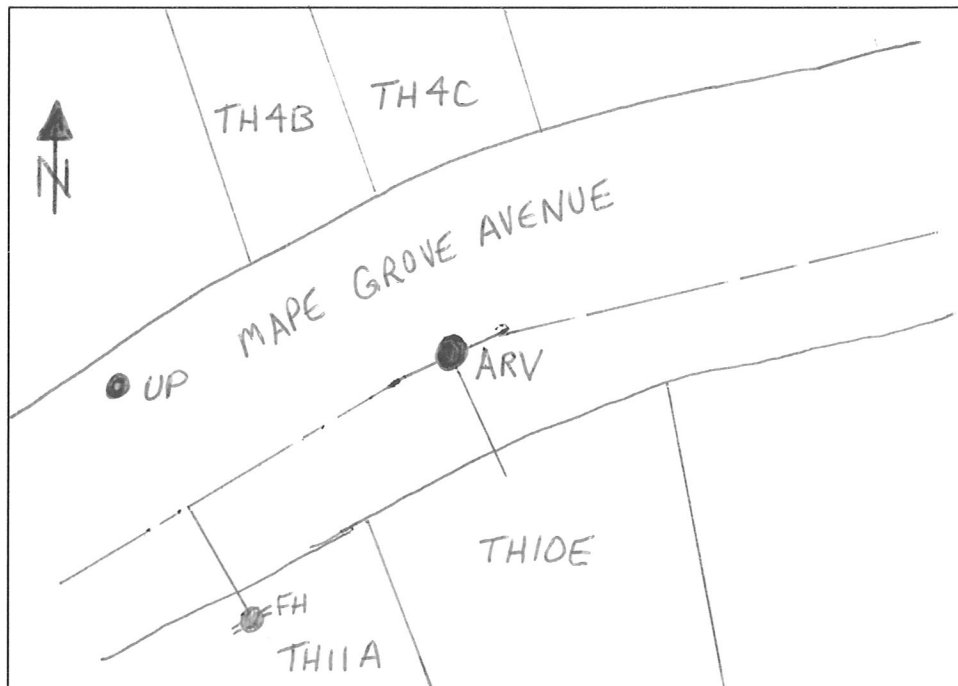
Number of Turns \_\_\_\_\_ Region \_\_\_\_\_ Pressure Zone \_\_\_\_\_

Ties to Valve (m): 1) UP = 13.3m  
2) FH = 11.5m

Remarks \_\_\_\_\_

     Gray areas to be completed internally by HRWC Staff.

Sketch



\* See Valve Attribute List Page for a Listing of Field Values.





**VALVE FIELD FORM** (Refer to Valve Attribute List for Coding Purposes)

Valve No.                      W.O.                     

Location MAPLE GROVE AVENUE Intersecting Street CABERNET COURT

Valve Size (mm) 200 Valve Key Number 3 Type GATE

Date Installed JUNE 2011 Valve Make MUELLER

Plat No.                      Depth 1.6m Anode YES

Status                      Set in BUFFALO BOX Close Direction R

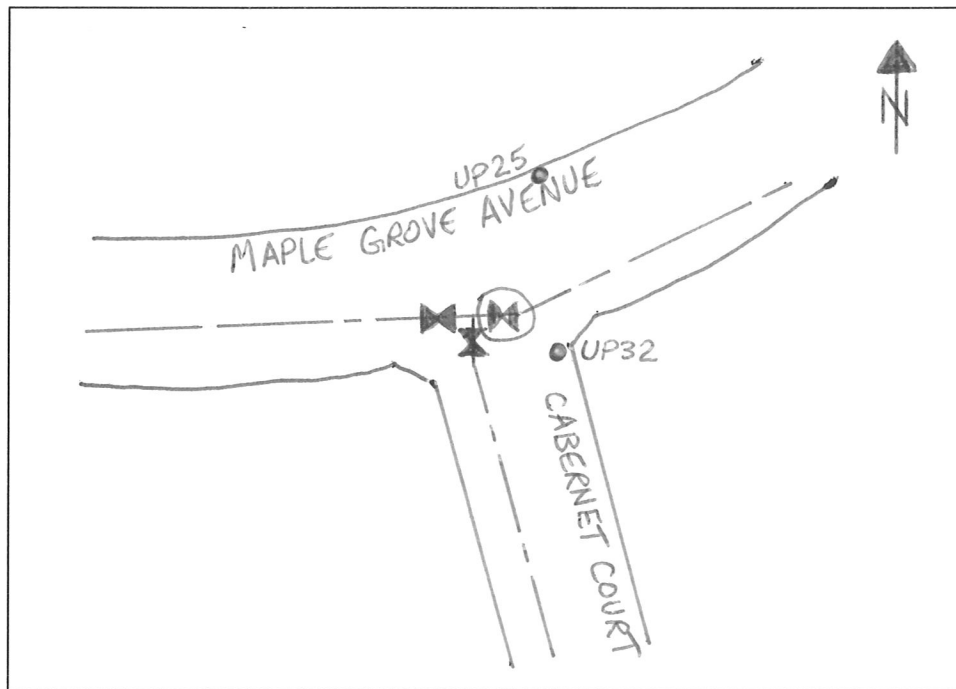
Number of Turns                      Region                      Pressure Zone                     

Ties to Valve (m): 1) UP25 = 13.1m  
2) UP32 = 10.0m

Remarks                     

           Gray areas to be completed internally by HRWC Staff.

Sketch



\* See Valve Attribute List Page for a Listing of Field Values.









**VALVE FIELD FORM** (Refer to Valve Attribute List for Coding Purposes)

Valve No. \_\_\_\_\_ W.O. \_\_\_\_\_

Location CABERNET COURT Intersecting Street SIENNA COURT

Valve Size (mm) 200 Valve Key Number 3 Type GATE

Date Installed JUNE 2011 Valve Make MUELLER

Plat No. \_\_\_\_\_ Depth 1.8m Anode YES

Status \_\_\_\_\_ Set in BUFFALO BOX Close Direction R

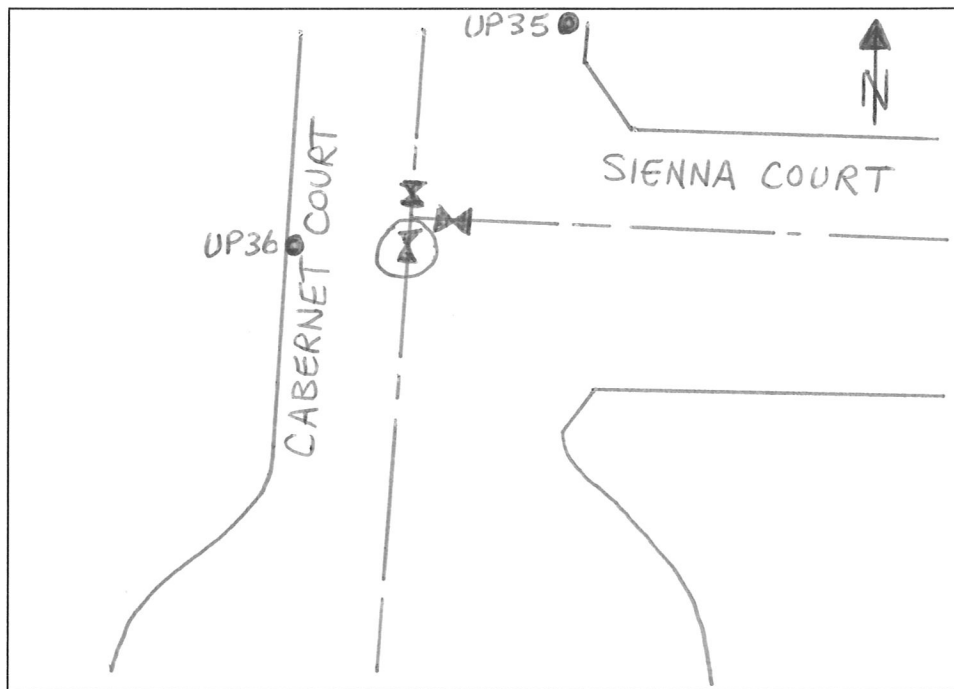
Number of Turns \_\_\_\_\_ Region \_\_\_\_\_ Pressure Zone \_\_\_\_\_

Ties to Valve (m): 1) UP35 = 29.1m  
2) UP36 = 3.4m

Remarks \_\_\_\_\_

\_\_\_\_\_ Gray areas to be completed internally by HRWC Staff.

Sketch



\* See Valve Attribute List Page for a Listing of Field Values.

**HYDRANT FIELD FORM** (Refer to Hydrant Attribute List for Coding Purposes)

Hydrant No.  W.O.

Hydrant Location CABERNET COURT Static Pressure

Hydrant Type CENTURION Hyd to Valve (m) 14.9m

Date Branch Installed JUNE 2011 Water Main Size (mm) 200

Valve to Main (m) 0.4m Date Valve Installed JUNE 2011

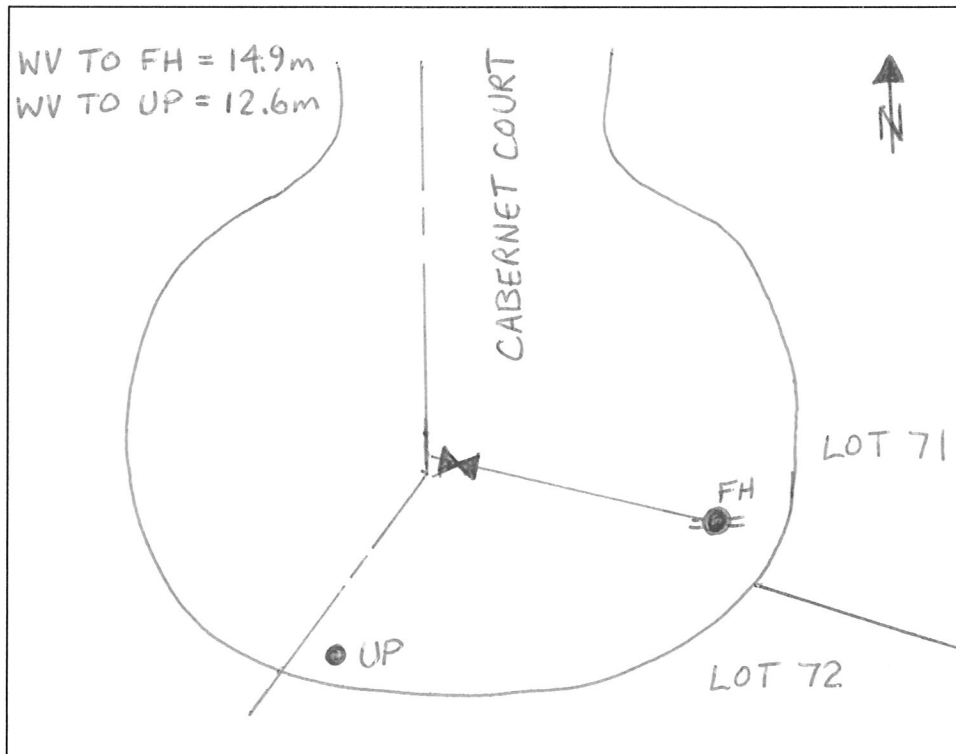
Date Hydrant Installed JUNE 2011 Depth (m) 1.7m Manufacturer MUELLER

Plat No.  Hydrant Connection RES-TEE Region

Remarks \_\_\_\_\_

Gray areas to be completed internally by HRWC Staff.

Sketch



\* See Hydrant Attribute List Page for a listing of Field Values.

**VALVE FIELD FORM** (Refer to Valve Attribute List for Coding Purposes)

Valve No.  W.O.

Location CABERNET COURT Intersecting Street WALKWAY

Valve Size (mm) 200 Valve Key Number 3 Type GATE

Date Installed JUNE 2011 Valve Make MUELLER

Plat No.  Depth 1.8m Anode YES

Status \_\_\_\_\_ Set in BUFFALO BOX Close Direction R

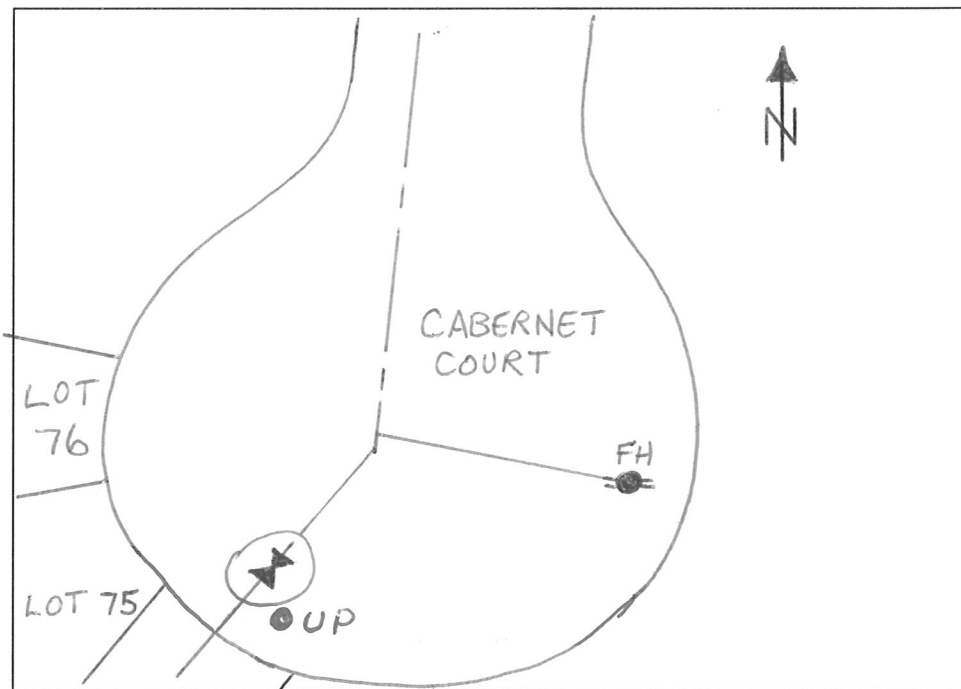
Number of Turns \_\_\_\_\_ Region  Pressure Zone

Ties to Valve (m): 1) FH = 20.6m  
2) UP = 2.3m

Remarks \_\_\_\_\_

Gray areas to be completed internally by HRWC Staff.

Sketch



\* See Valve Attribute List Page for a Listing of Field Values.



**VALVE FIELD FORM** (Refer to Valve Attribute List for Coding Purposes)

Valve No.  W.O.

Location MAPLE DRIVE Intersecting Street WALKWAY

Valve Size (mm) 200 Valve Key Number 3 Type GATE

Date Installed JUNE 2011 Valve Make MUELLER

Plat No.  Depth 1.7m Anode YES

Status \_\_\_\_\_ Set in BUFFALO BOX Close Direction R

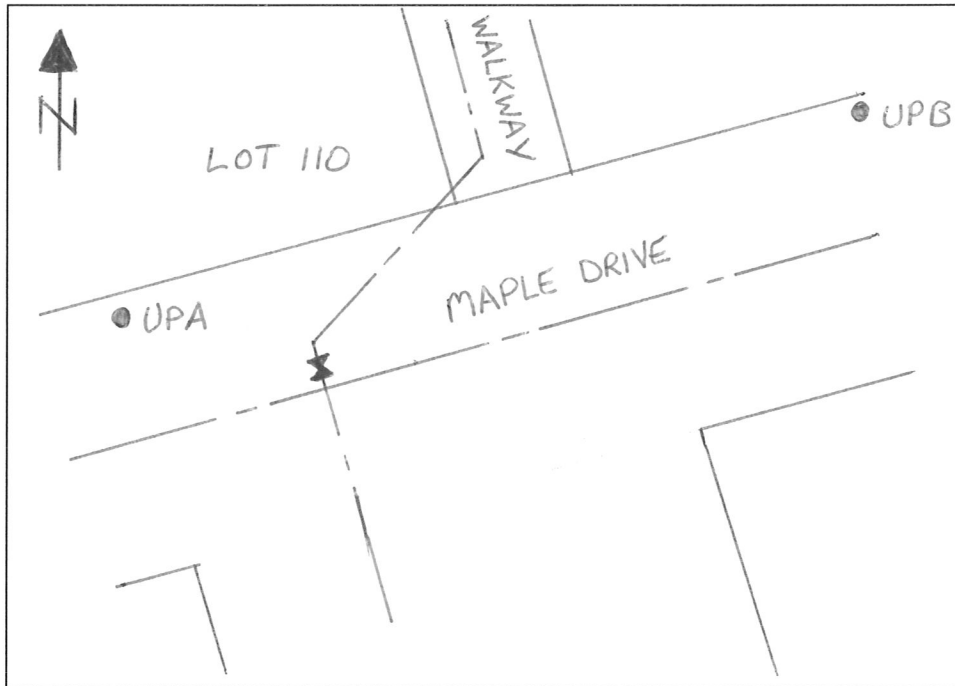
Number of Turns \_\_\_\_\_ Region  Pressure Zone

Ties to Valve (m): 1) UPA = 7.9m  
2) UPB = 36.0m

Remarks \_\_\_\_\_

Gray areas to be completed internally by HRWC Staff.

Sketch



\* See Valve Attribute List Page for a Listing of Field Values.

**HYDRANT FIELD FORM** (Refer to Hydrant Attribute List for Coding Purposes)

Hydrant No.  W.O.

Hydrant Location SIENNA COURT Static Pressure

Hydrant Type CENTURION Hyd to Valve (m) 2.3

Date Branch Installed JUNE 2011 Water Main Size (mm) 200

Valve to Main (m) 0.4 Date Valve Installed JUNE 2011

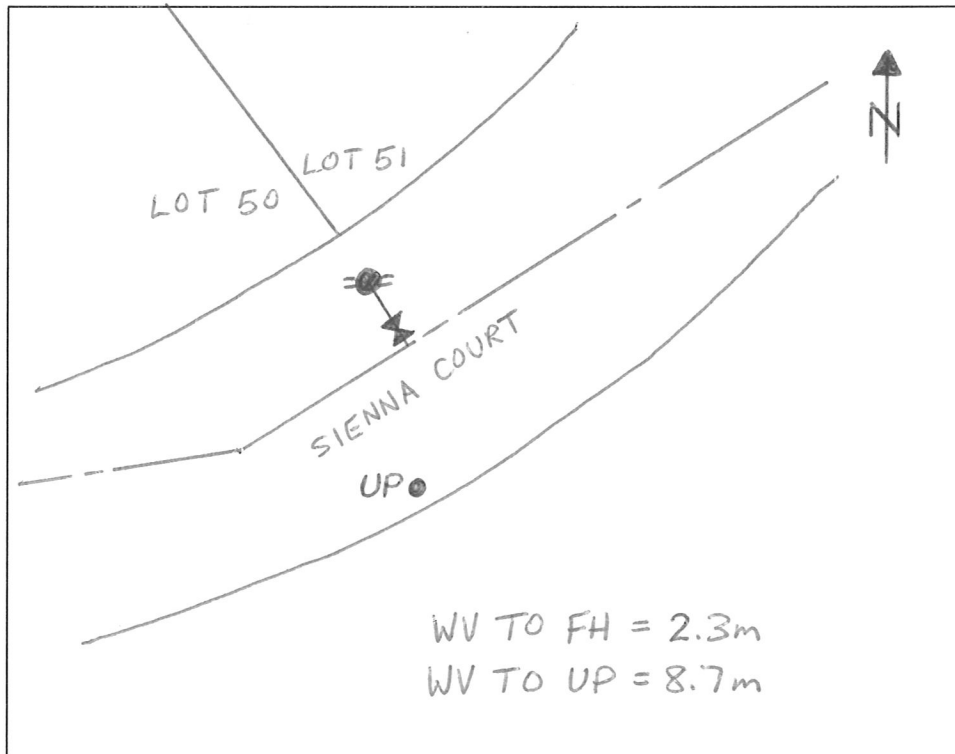
Date Hydrant Installed JUNE 2011 Depth (m) 1.9 Manufacturer MUELLER

Plat No.  Hydrant Connection RES-TEE Region

Remarks

Gray areas to be completed internally by HRWC Staff.

**Sketch**



\* See Hydrant Attribute List Page for a listing of Field Values.

**VALVE FIELD FORM** (Refer to Valve Attribute List for Coding Purposes)

Valve No. \_\_\_\_\_ W.O. \_\_\_\_\_

Location SIENNA COURT Intersecting Street EASEMENT

Valve Size (mm) 200 Valve Key Number 3 Type GATE

Date Installed JUNE 2011 Valve Make MUELLER

Plat No. \_\_\_\_\_ Depth 1.7m Anode YES

Status \_\_\_\_\_ Set in BUFFALO BOX Close Direction R

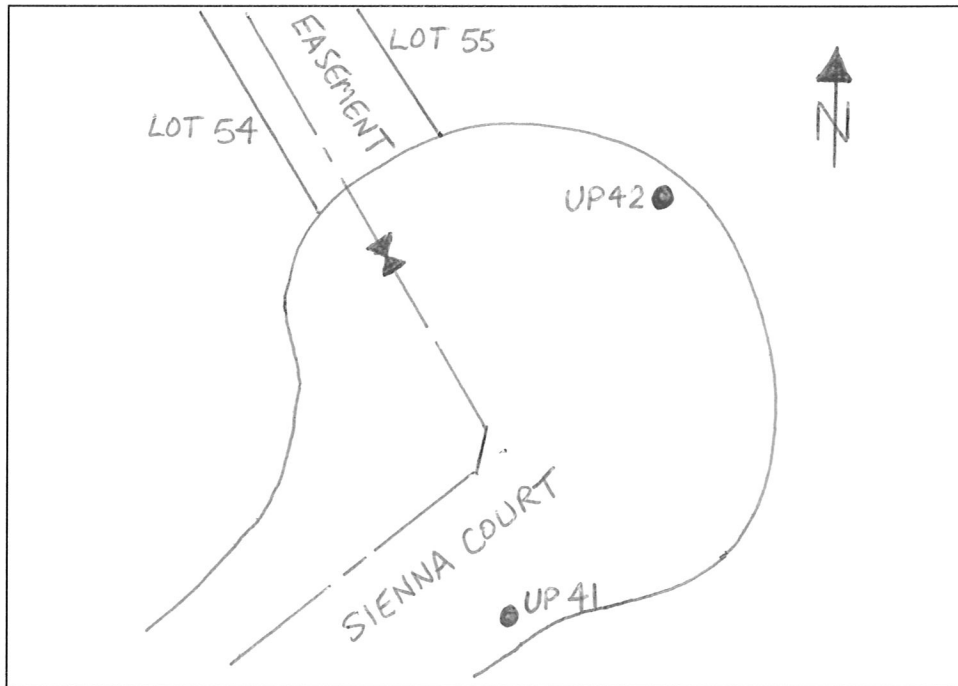
Number of Turns \_\_\_\_\_ Region \_\_\_\_\_ Pressure Zone \_\_\_\_\_

Ties to Valve (m): 1) UP 41 = 26.9m  
2) UP 42 = 13.7m

Remarks \_\_\_\_\_

\_\_\_\_\_ Gray areas to be completed internally by HRWC Staff.

Sketch



\* See Valve Attribute List Page for a Listing of Field Values.

**HYDRANT FIELD FORM** (Refer to Hydrant Attribute List for Coding Purposes)

Hydrant No.  W.O.

Hydrant Location MAPLE GROVE AVENUE Static Pressure

Hydrant Type CENTURION Hyd to Valve (m) 2.0

Date Branch Installed JUNE 2011 Water Main Size (mm) 200

Valve to Main (m) 0.6 Date Valve Installed JUNE 2011

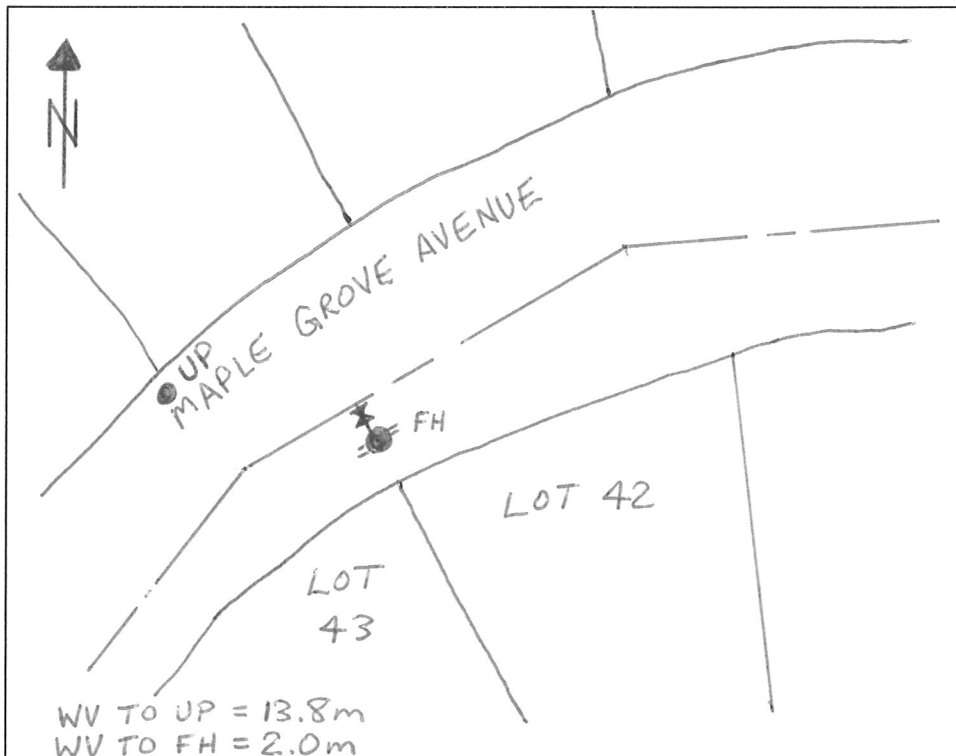
Date Hydrant Installed JUNE 2011 Depth (m) 1.7 Manufacturer MUELLER

Plat No.  Hydrant Connection RES-TEE Region

Remarks \_\_\_\_\_

Gray areas to be completed internally by HRWC Staff.

**Sketch**



\* See Hydrant Attribute List Page for a listing of Field Values.

**VALVE FIELD FORM** (Refer to Valve Attribute List for Coding Purposes)

Valve No.  W.O.

Location MAPLE GROVE AVENUE Intersecting Street EASEMENT 106

Valve Size (mm) 200 Valve Key Number 3 Type GATE

Date Installed JUNE 2011 Valve Make MUELLER

Plat No.  Depth 1.7m Anode YES

Status  Set in BUFFALO BOX Close Direction R

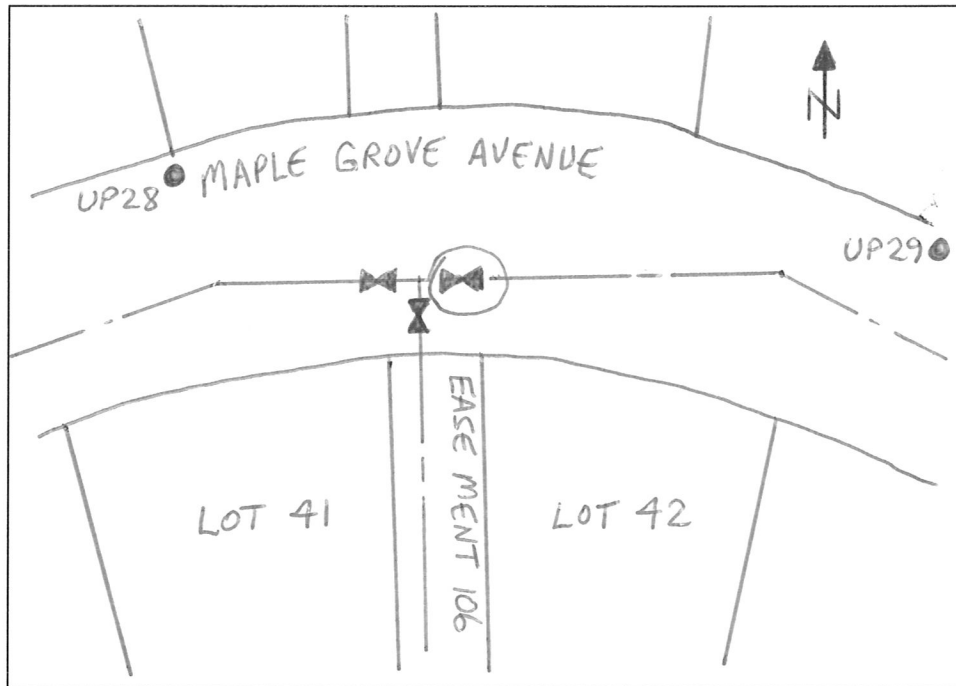
Number of Turns  Region  Pressure Zone

Ties to Valve (m): 1) UP28 = 14.5m  
2) UP29 = 33.7m

Remarks

Gray areas to be completed internally by HRWC Staff.

Sketch



\* See Valve Attribute List Page for a Listing of Field Values.

**VALVE FIELD FORM** (Refer to Valve Attribute List for Coding Purposes)

Valve No. \_\_\_\_\_ W.O. \_\_\_\_\_

Location MAPLE GROVE AVENUE Intersecting Street EASEMENT 106

Valve Size (mm) 200 Valve Key Number 3 Type GATE

Date Installed JUNE 2011 Valve Make MUELLER

Plat No. \_\_\_\_\_ Depth 2.0m Anode YES

Status \_\_\_\_\_ Set in BUFFALO BOX Close Direction R

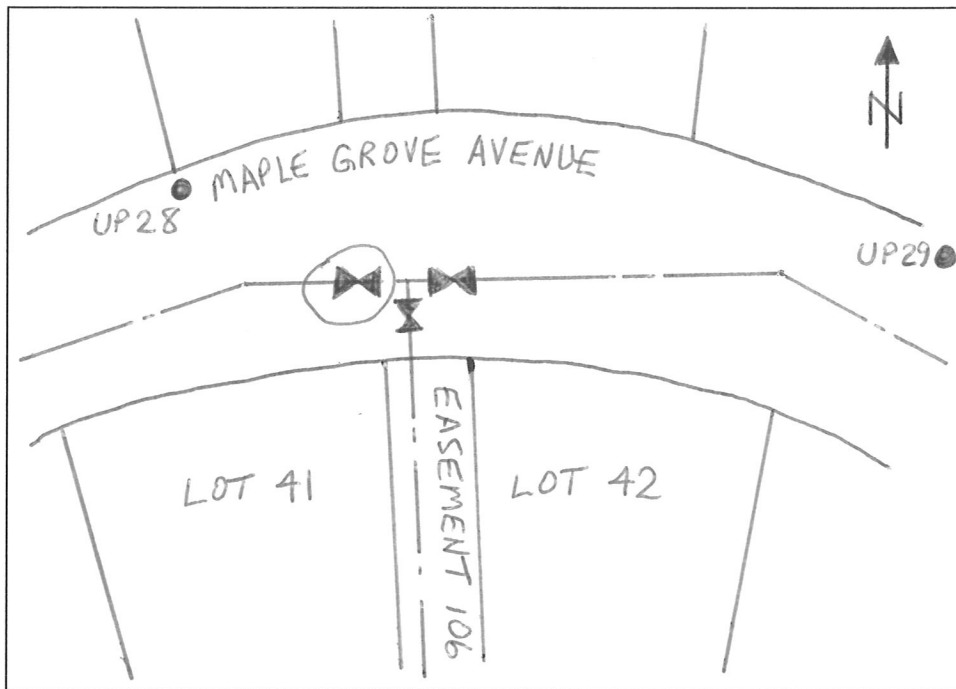
Number of Turns \_\_\_\_\_ Region \_\_\_\_\_ Pressure Zone \_\_\_\_\_

Ties to Valve (m): 1) UP 28 = 12.2m  
2) UP 29 = 36.3m

Remarks \_\_\_\_\_

\_\_\_\_\_  
Gray areas to be completed internally by HRWC Staff.

Sketch



\* See Valve Attribute List Page for a Listing of Field Values.

**VALVE FIELD FORM** (Refer to Valve Attribute List for Coding Purposes)

Valve No.  W.O.

Location MAPLE GROVE AVENUE Intersecting Street EASEMENT 106

Valve Size (mm) 200 Valve Key Number 3 Type GATE

Date Installed JUNE 2011 Valve Make MUELLER

Plat No.  Depth 1.8m Anode YES

Status \_\_\_\_\_ Set in BUFFALO BOX Close Direction R

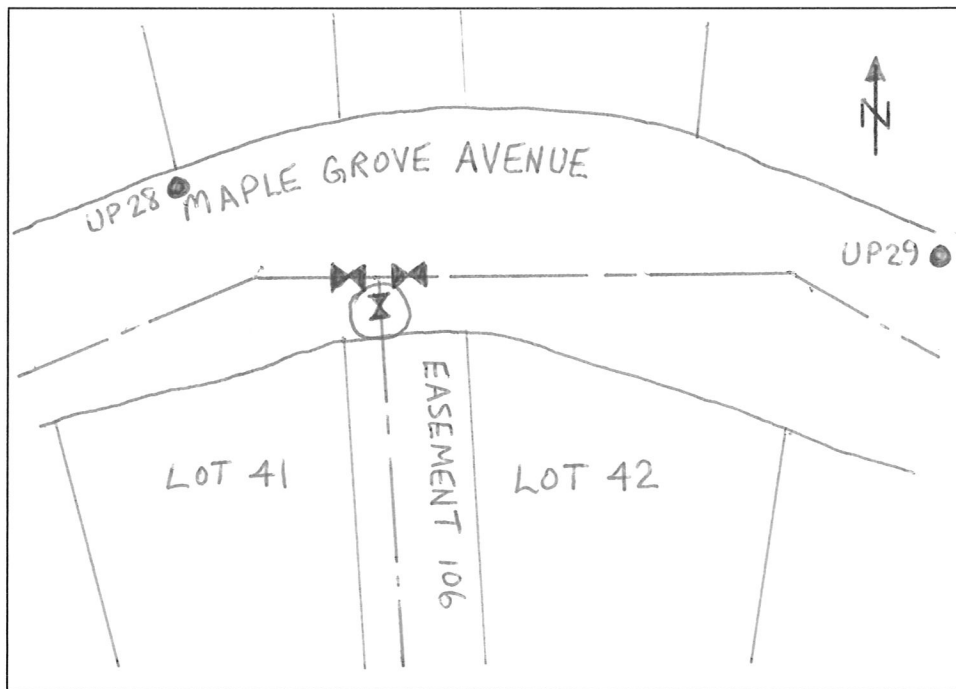
Number of Turns \_\_\_\_\_ Region  Pressure Zone

Ties to Valve (m): 1) UP 28 = 14.0m  
2) UP 29 = 35.0m

Remarks \_\_\_\_\_

Gray areas to be completed internally by HRWC Staff.

Sketch



\* See Valve Attribute List Page for a Listing of Field Values.

**VALVE FIELD FORM** (Refer to Valve Attribute List for Coding Purposes)

Valve No. \_\_\_\_\_ W.O. \_\_\_\_\_

Location MAPLE GROVE AVENUE Intersecting Street LAKEVIEW DRIVE

Valve Size (mm) 200 Valve Key Number 3 Type GATE

Date Installed JUNE 2011 Valve Make MUELLER

Plat No. \_\_\_\_\_ Depth 2.3m Anode YES

Status \_\_\_\_\_ Set in BUFFALO BOX Close Direction R

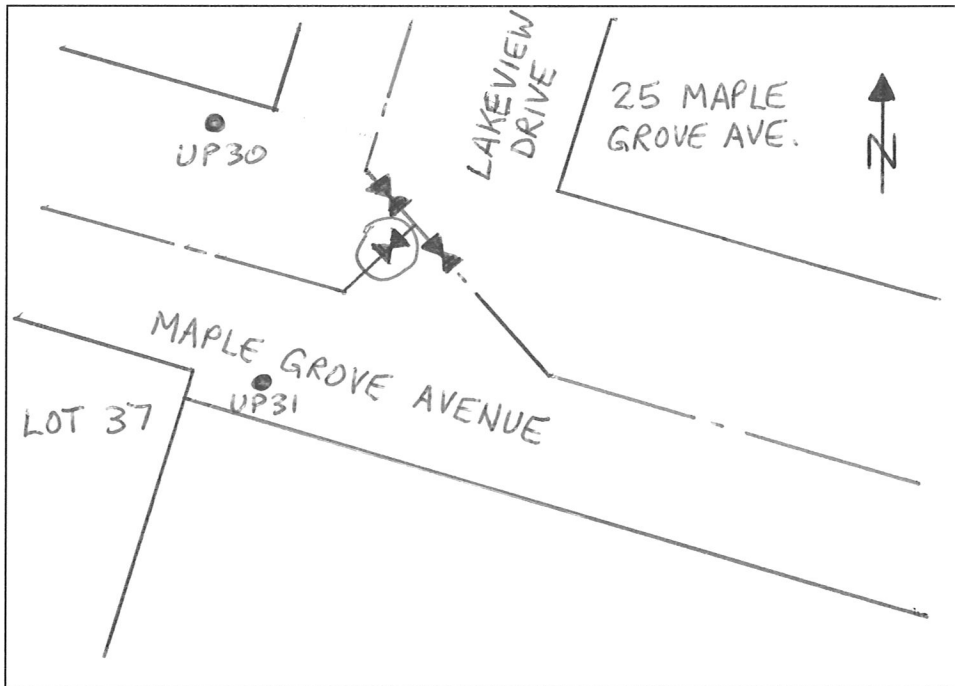
Number of Turns \_\_\_\_\_ Region \_\_\_\_\_ Pressure Zone \_\_\_\_\_

Ties to Valve (m): 1) UP30 = 17.4m  
 2) UP31 = 11.6m

Remarks \_\_\_\_\_

 Gray areas to be completed internally by HRWC Staff.

Sketch



\* See Valve Attribute List Page for a Listing of Field Values.



**VALVE FIELD FORM** (Refer to Valve Attribute List for Coding Purposes)

Valve No. \_\_\_\_\_ W.O. \_\_\_\_\_

Location MAPLE GROVE AVENUE Intersecting Street LAKE VIEW DRIVE

Valve Size (mm) 200 Valve Key Number 3 Type GATE

Date Installed JUNE 2011 Valve Make MUELLER

Plat No. \_\_\_\_\_ Depth 2.2m Anode YES

Status \_\_\_\_\_ Set in BUFFALO BOX Close Direction R

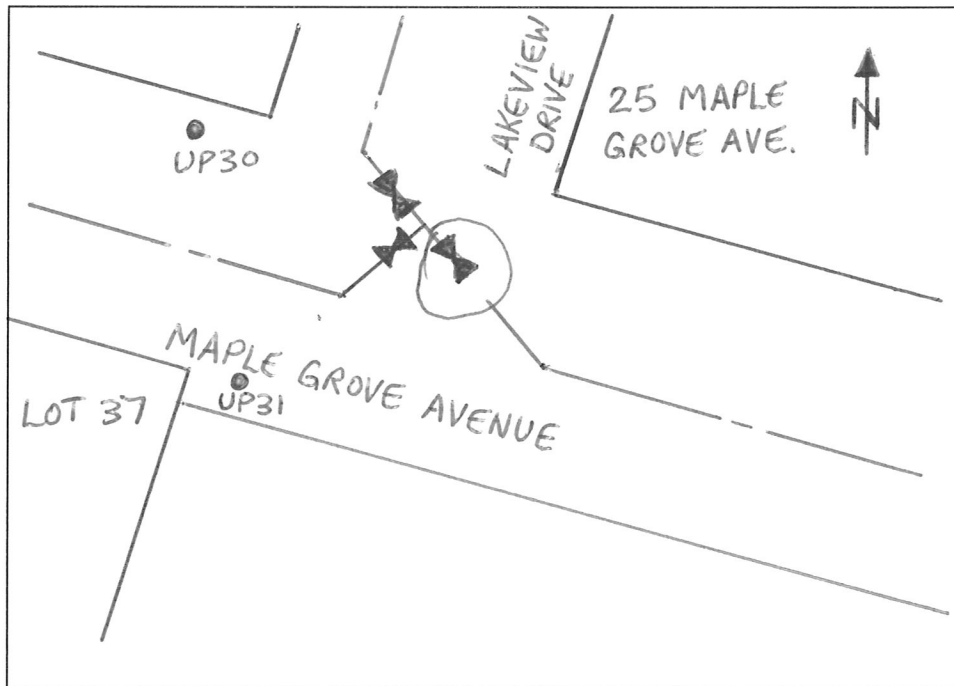
Number of Turns \_\_\_\_\_ Region \_\_\_\_\_ Pressure Zone \_\_\_\_\_

Ties to Valve (m): 1) UP 30 = 19.2m  
2) UP 31 = 12.8m

Remarks \_\_\_\_\_

Gray areas to be completed internally by HRWC Staff.

Sketch



\* See Valve Attribute List Page for a Listing of Field Values.

**VALVE FIELD FORM** (Refer to Valve Attribute List for Coding Purposes)

Valve No. \_\_\_\_\_ W.O. \_\_\_\_\_

Location MAPLE GROVE AVENUE Intersecting Street LAKEVIEW DRIVE

Valve Size (mm) 200 Valve Key Number 3 Type GATE

Date Installed JUNE 2011 Valve Make MUELLER

Plat No. \_\_\_\_\_ Depth 2.2m Anode YES

Status \_\_\_\_\_ Set in BUFFALO BOX Close Direction R

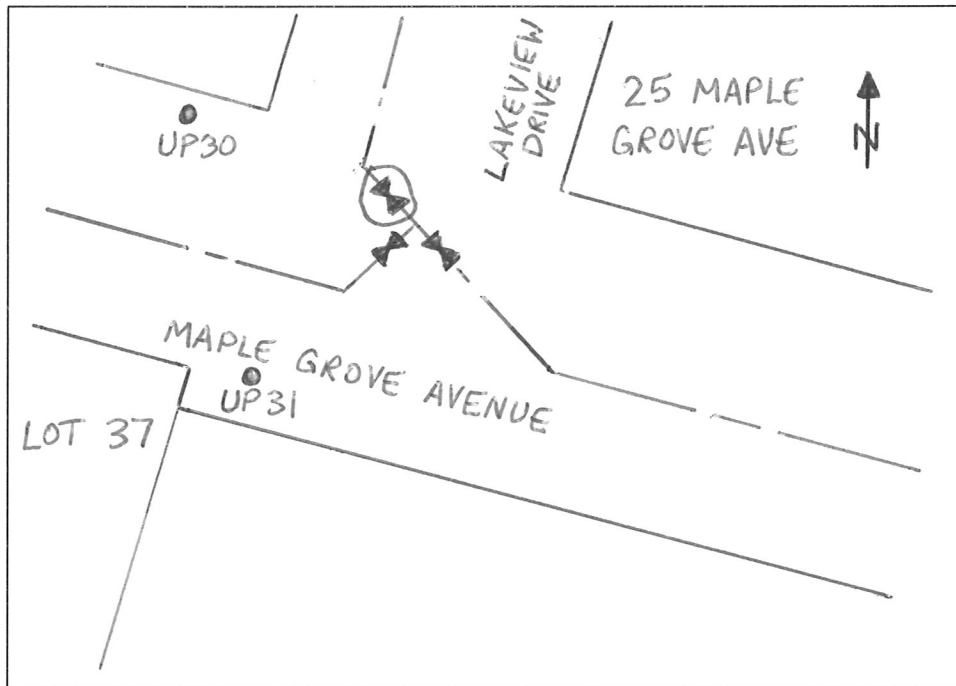
Number of Turns \_\_\_\_\_ Region \_\_\_\_\_ Pressure Zone \_\_\_\_\_

Ties to Valve (m): 1) UP30 = 17.1m  
2) UP31 = 13.0m

Remarks \_\_\_\_\_

**\_\_\_\_\_** Gray areas to be completed internally by HRWC Staff.

Sketch



\* See Valve Attribute List Page for a Listing of Field Values.