

LEGEND:

CONSTRUCTED	PRE-EXISTING
EDGE OF PAVEMENT	EDGE OF PAVEMENT
LOTLINE	LOTLINE
WATERMAIN & GATE VALVE	WATERMAIN & GATE VALVE
SANITARY PIPE & MANHOLE	SANITARY PIPE & MANHOLE
STORM PIPE & MANHOLE	STORM PIPE & MANHOLE
UTILITY LINES & POLE	UTILITY LINES & POLE
STREET BOUNDARY	STREET BOUNDARY
PROPERTY BOUNDARY	PROPERTY BOUNDARY
EASEMENT	EASEMENT
CURB & DRIVEWAY CUT	CURB & DRIVEWAY CUT
CATCH BASIN	CATCH BASIN
FIRE HYDRANT	FIRE HYDRANT
STREET TREE	STREET TREE
ROAD SIGN	ROAD SIGN
ENDCAP	ENDCAP
CULVERT	CULVERT
SANITARY LATERAL	SANITARY LATERAL
WATER LATERAL	WATER LATERAL
CATCH BASIN LEAD	CATCH BASIN LEAD
HEADWALL	HEADWALL
SIDEWALK	SIDEWALK
FENCE	FENCE

DISCLAIMER:  
DRAWINGS ARE PRELIMINARY AND ARE SUBJECT TO APPROVAL PRIOR TO CONSTRUCTION. THIS DRAWING AND DESIGN IS COPYRIGHT PROTECTED WHICH SHALL NOT BE USED, REPRODUCED OR REVISED WITHOUT WRITTEN PERMISSION BY WSP CANADA INC. THE CONTRACTOR SHALL CHECK AND VERIFY ALL DIMENSIONS AND UTILITY LOCATIONS AND REPORT ALL ERRORS AND OMISSIONS PRIOR TO COMMENCING WORK. SEE SHEET 11 FOR CONSTRUCTION NOTES AND DETAILS.

REVISION:

NO.	DATE	DESCRIPTION
11	2018/10/15	RECORD DRAWING
10	2018/04/04	REVISIONS FOR APPROVED LIGHT DESIGN
9	2018/03/21	ISSUED FOR CONSTRUCTION
8	2018/02/26	REVISED LOTS 216-232, PRIMARY POWER
7	2013/07/22	2017/10/27 VARIOUS REVISIONS
6	2012/12/21	ISSUED FOR REVIEW

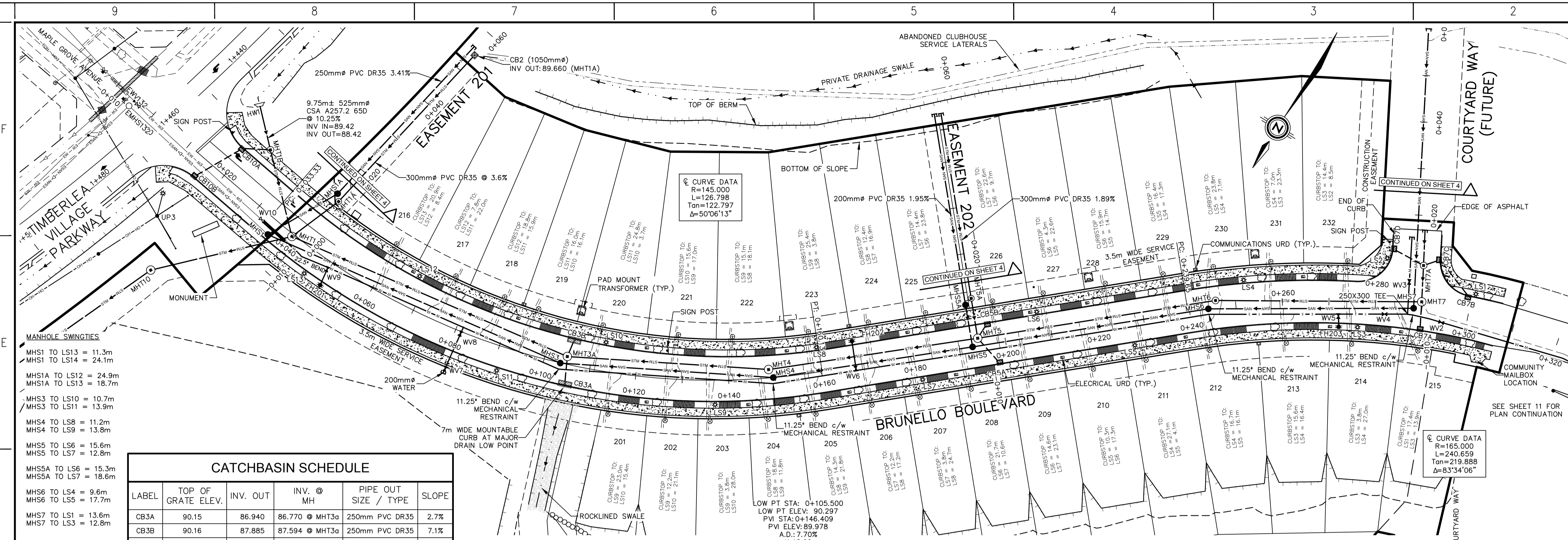
PROJECT NO: 121-24187  
DATE: 2012/12/21  
ORIGINAL SCALE: HORIZONTAL: 1:500 VERTICAL: 1:50  
DESIGNED BY: S. HANNAM, CET  
CHECKED BY: C. MUTCH, P.ENG.  
SCALE: 1:500 METRIC  
10 8 6 4 2 0 10 20 30

CLIENT: BRUNELLO ESTATES INC.

BRUNELLO ESTATES  
PHASE 2.1  
TIMBERLEA, NOVA SCOTIA

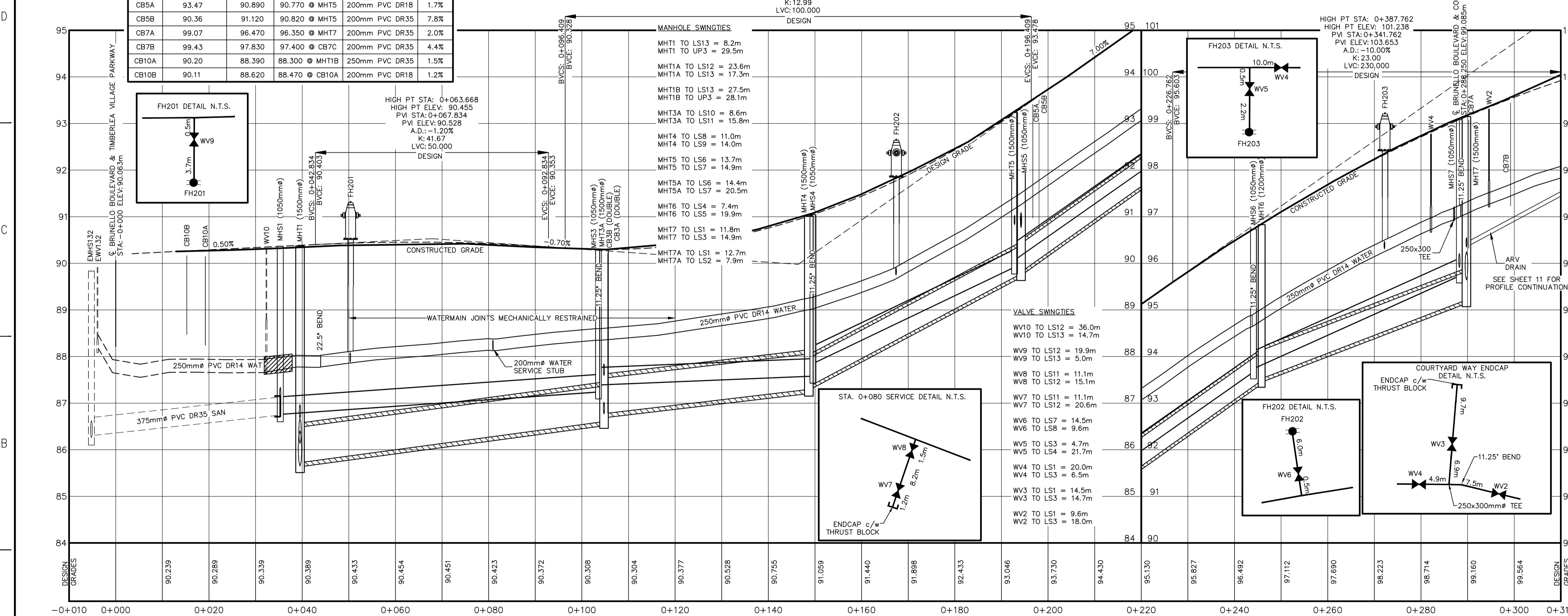
TITLE: PLAN AND PROFILE  
BRUNELLO BOULEVARD  
-0+010 TO 0+310

SHEET NUMBER: 2 OF 11  
RECORD DRAWING  
DATE OF: 2018/10/15



**CATCHBASIN SCHEDULE**

LABEL	TOP OF GRATE ELEV.	INV. OUT	INV. @ MH	PIPE OUT SIZE / TYPE	SLOPE
CB3A	90.15	86.940	86.770 @ MHT3a	250mm PVC DR35	2.7%
CB3B	90.16	87.885	87.594 @ MHT3a	250mm PVC DR35	7.1%
CB5A	93.47	90.890	90.770 @ MHT5	200mm PVC DR18	1.7%
CB5B	90.36	91.120	90.820 @ MHT5	200mm PVC DR35	7.8%
CB7A	99.07	96.470	96.350 @ MHT7	200mm PVC DR35	2.0%
CB7B	99.43	97.830	97.400 @ CB7B	200mm PVC DR35	4.4%
CB10A	90.20	88.390	88.300 @ MHT1B	250mm PVC DR35	1.5%
CB10B	90.11	88.620	88.470 @ CB10A	200mm PVC DR18	1.2%



DESIGN GRADES	90.239	90.289	90.339	90.389	90.433	90.454	90.451	90.423	90.372	90.308	90.304	90.377	90.528	90.755	91.059	91.440	91.898	92.433	93.046	93.730	94.430	95.130	95.827	96.492	97.112	97.690	98.223	98.714	99.160	99.564
SANITARY INVERT	86.31			86.75 86.76						87.24 87.39					87.58 87.85					89.82 90.07				93.67 93.74				95.73		
SANITARY GRADE		EXISTING 40.59m ± 375mm				68.5m ± 375mm						45.8m ± 375mm				43.3m ± 375mm							51.2m ± 375mm				44.0m ± 375mm			
STORM GRADE		PVC DR35 @ 1.1%				PVC DR35 @ 0.7%						PVC DR35 @ 0.4%				PVC DR35 @ 4.8%							51.7m ± 600mm				44.2m ± 600mm			
STORM INVERT				85.73		64.5m ± 750mm						43.3m ± 750mm				45.4m ± 600mm							51.7m ± 600mm				44.2m ± 600mm			
						CSA A257.2 650 @ 1.4%						CSA A257.2 650 @ 1.2%				CSA A257.2 650 @ 5.3%							CSA A257.2 650 @ 7.1%				CSA A257.2 650 @ 3.8%			

XREFS: K:\DARTMOUTH\2012\121-24187-BRUNELLO PH 2\1\DWG\ENGR\RECORD DRAWING\121-24187-BRUNELLO PH 2.DWG

BY: GRAGLUTZ PRINTED: 8:52 AM 2018/10/15