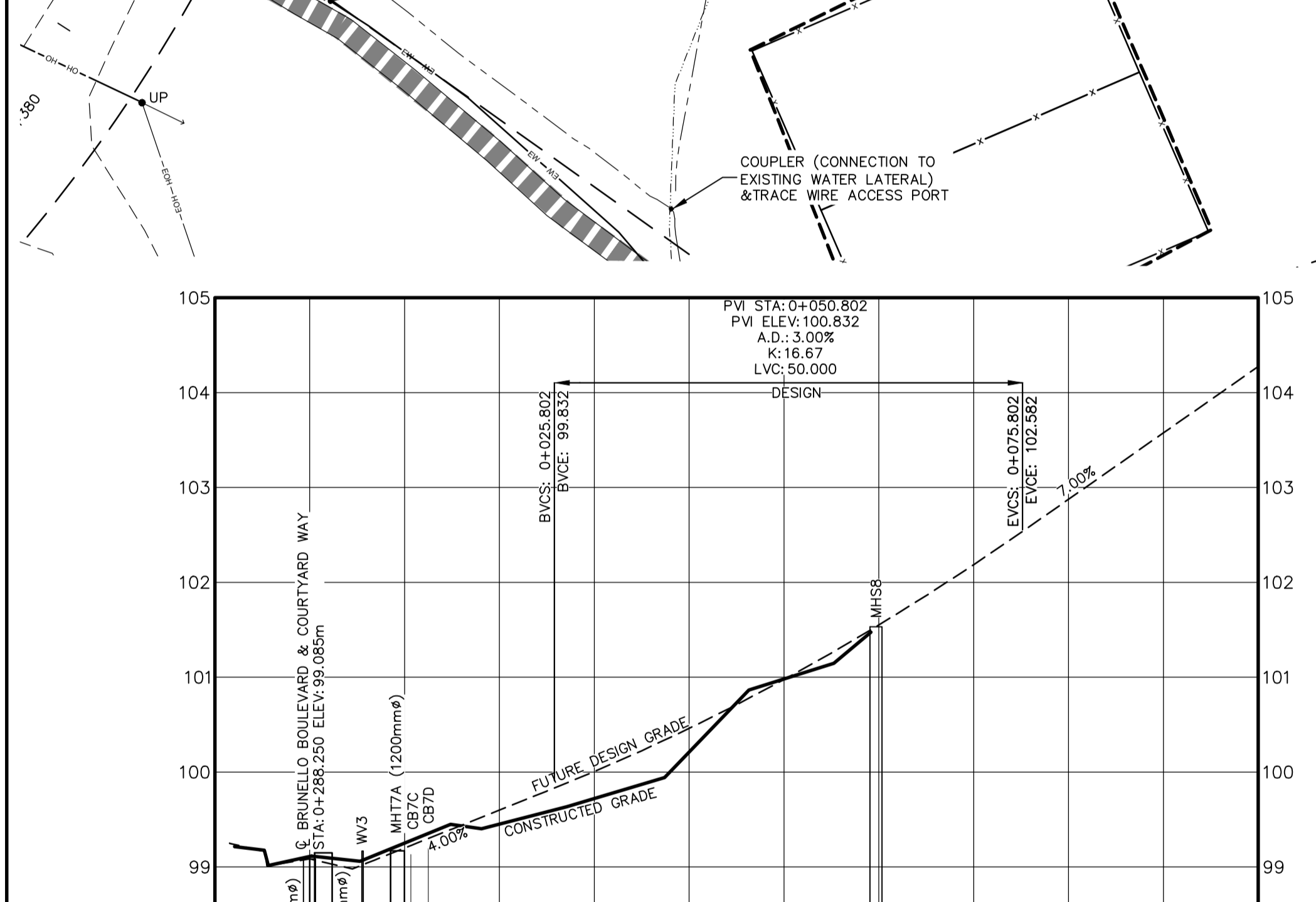
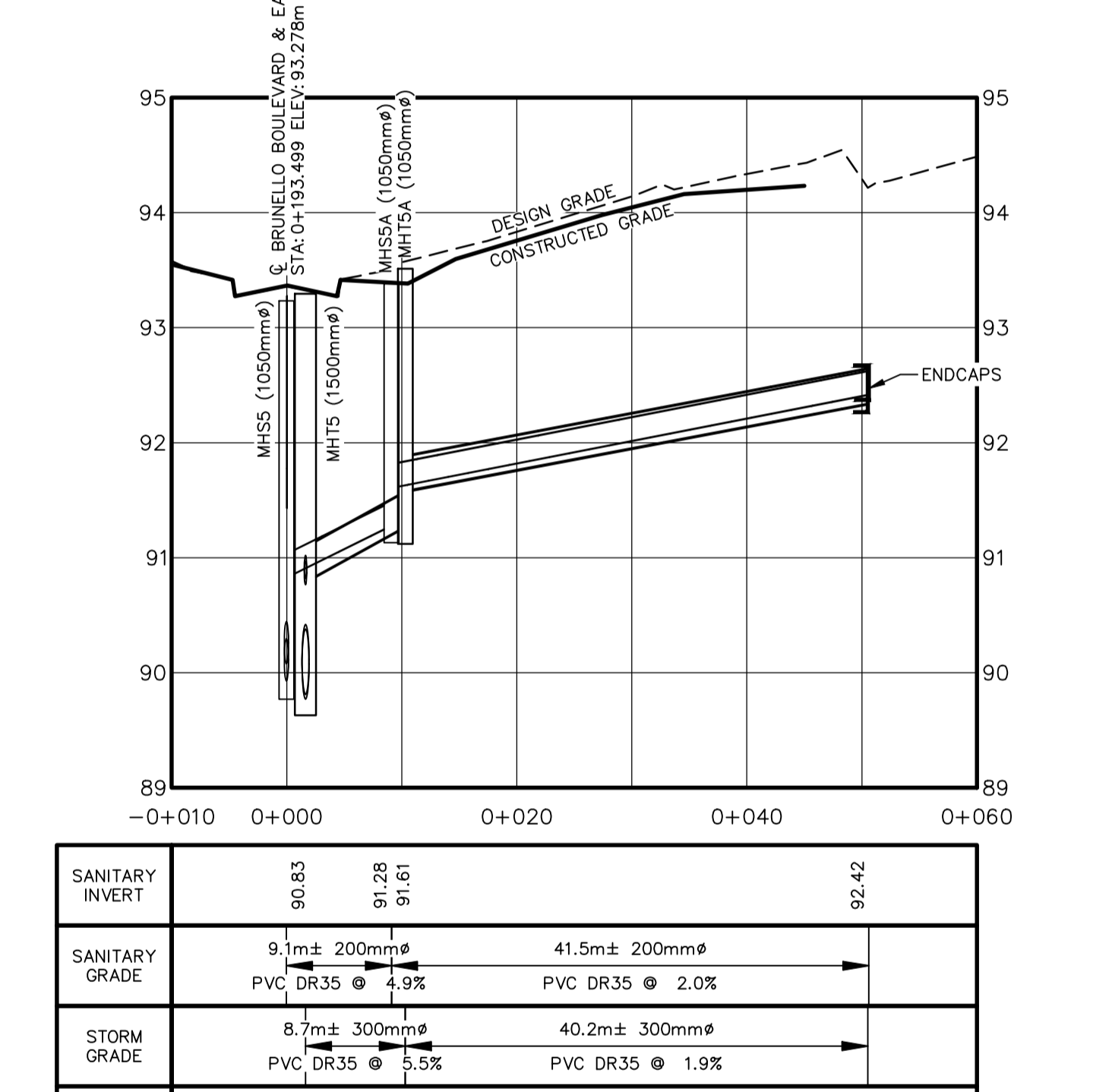
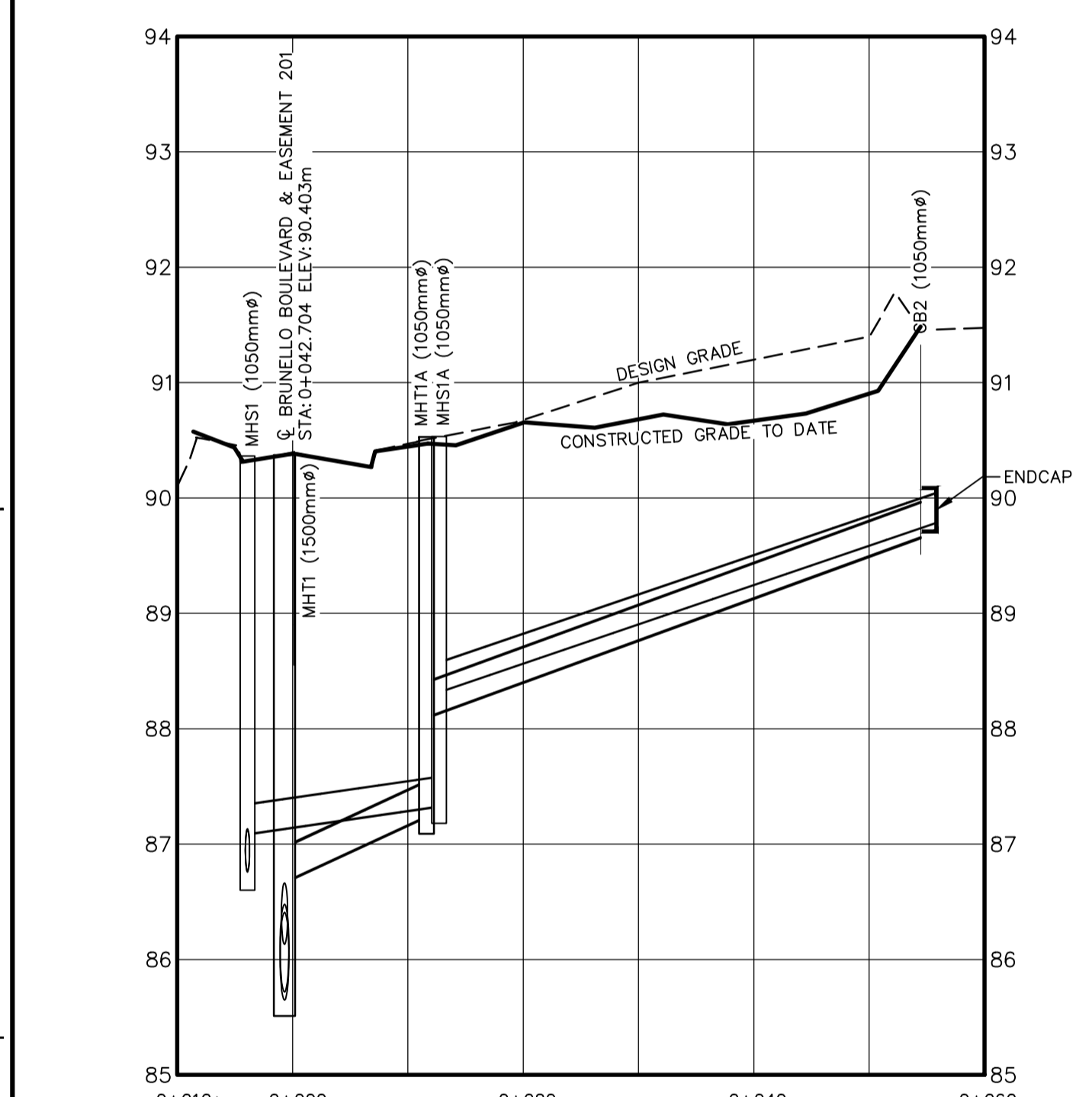


CATCHBASIN SCHEDULE					
LABEL	TOP OF GRATE ELEV.	INV. OUT	INV. @ MH	PIPE OUT SIZE / TYPE	SLOPE
CB7C	99.14	97.220	96.880 @ MHT7A	250mm PVC DR35	9.0%
CB7D	99.16	96.810	96.730 @ MHT7A	200mm PVC DR18	1.1%



SANITARY INVERT	87.09	87.33	88.32	89.79
SANITARY GRADE	17.4m ± 250mm @ 1.4%	43.1m ± 250mm @ 3.4%		
STORM GRADE	12.5m ± 300mm @ 4.6%	42.9m ± 300mm @ 3.6%		
STORM INVERT	86.67	87.24	88.10	89.66

SANITARY INVERT	90.83	91.28	91.61	92.42
SANITARY GRADE	9.1m ± 200mm @ 4.9%	41.5m ± 200mm @ 2.0%		
STORM GRADE	8.7m ± 300mm @ 5.5%	40.2m ± 300mm @ 1.9%		
STORM INVERT	90.79	91.22	91.38	92.34

SANITARY INVERT	95.91	97.84	97.91
SANITARY GRADE	59.7m ± 300mm @ 3.2%	1.5m ± 300mm @ 1.3%	
STORM GRADE	7.8m ± 600mm @ 2.9%	7.6m ± 600mm @ 3.6%	
STORM INVERT	95.65	95.88	95.93

WSP Canada Inc.
1 Sparrowhawk Lake Drive
Dartmouth, Nova Scotia, Canada B3B 1X7
T 902-835-9955 F 902-835-1645 www.wsp.com

REVISION	DATE	DESCRIPTION
11	2018/10/15	RECORD DRAWING
10	2018/04/04	REVISIONS FOR APPROVED LIGHT DESIGN
9	2018/03/21	ISSUED FOR CONSTRUCTION
8	2018/02/26	REVISED LOTS 216-232, PRIMARY POWER
7	2013/07/22	2017/10/27 VARIOUS REVISIONS
0	2012/12/21	ISSUED FOR REVIEW

PROJECT NO: 121-24187 DATE: 2012/12/21
 ORIGINAL SCALE: HORIZONTAL: 1:500 VERTICAL: 1:50
 DESIGNED BY: C. MUTCH, P.ENG
 DRAWN BY: S. HANNAM, CET
 CHECKED BY: C. MUTCH, P.ENG

SCALE: 1:500 METRIC

BRUNELLO ESTATES INC.

BRUNELLO ESTATES
PHASE 2.1
TIMBERLEA, NOVA SCOTIA

TITLE: PLAN AND PROFILE
EASEMENTS/COURTYARD WAY
-0+010 TO 0+060/-0+010 TO 0+100

SHEET NUMBER: 4

ISSUE: 4 OF 11

RECORD DRAWING

DATE OF: 2018/10/15

REV # 11

XREFS: K:\DARTMOUTH\2012\21-24187-BRUNELLO.PH 21\DWG\ENG\RECORD DRAWING\21-24187-BRUNELLO.PH 21\DWG\ENG\RECORD DRAWING\21-24187-COURTYARD_RECORD.DWG K:\DARTMOUTH\2012\21-24187-BRUNELLO.PH 21\DWG\ENG\RECORD DRAWING\21-24187-COURTYARD_RECORD.DWG

BY: CRAIG LUTZ PRINTED: 8:42 AM 2018/10/15 001