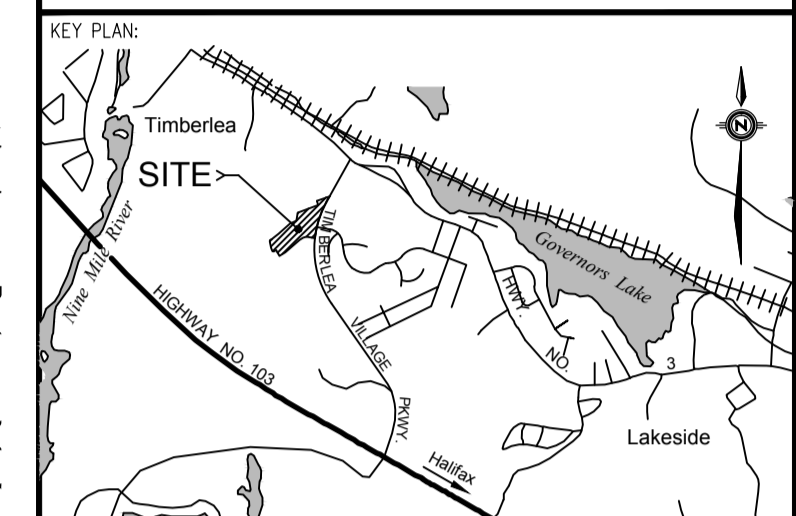
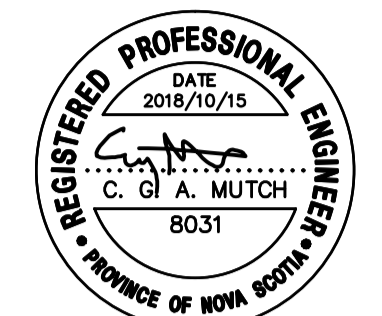


WSP Canada Inc.
 11 Sparadack Lake Drive
 Dartmouth, Nova Scotia, Canada B3B 1X7
 T 902-835-9955 F 902-835-1645 www.wsp.com



LEGEND:

	PROPOSED	EXISTING
EDGE OF PAVEMENT		
LOTLINE		
BOTTOM OF SLOPE		
TOP OF SLOPE		
SWALE / DITCH		
SPOT ELEVATION		
STREET BOUNDARY		
PROPERTY BOUNDARY		
EASEMENT		
CURB & DRIVEWAY CUT		
FLOW DIRECTION ARROW		
		CULVERT
		HEADWALL
		FENCE
		CATCH BASIN
		SIDEWALK

DISCLAIMER:
 DRAWINGS ARE PRELIMINARY AND ARE SUBJECT TO APPROVAL PRIOR TO CONSTRUCTION. THIS DRAWING AND DESIGN IS COPYRIGHT PROTECTED WHICH SHALL NOT BE USED, REPRODUCED OR REVISED WITHOUT WRITTEN PERMISSION BY WSP CANADA INC. THE CONTRACTOR SHALL CHECK AND VERIFY ALL DIMENSIONS AND UTILITY LOCATIONS AND REPORT ALL ERRORS AND OMISSIONS PRIOR TO COMMENCING WORK. SEE SHEET 11 FOR CONSTRUCTION NOTES AND DETAILS.

REVISION:

NO.	DATE	DESCRIPTION
11	2018/10/15	REVISED AT STREET CONSTRUCTION COMPLETION
10	2018/04/04	REVISIONS FOR APPROVED LIGHT DESIGN
9	2018/03/21	ISSUED FOR CONSTRUCTION
8	2018/02/26	REVISED LOTS 216-232, PRIMARY POWER
7	2013/07/22	2017/10/27 VARIOUS REVISIONS
6	2012/12/21	ISSUED FOR REVIEW

PROJECT NO: 121-24187 DATE: 2012/12/21

ORIGINAL SCALE: HORIZONTAL: 1:500 VERTICAL: N/A

DESIGNED BY: C. MUTCH, P.ENG.

DRAWN BY: S. HANNAN, CET

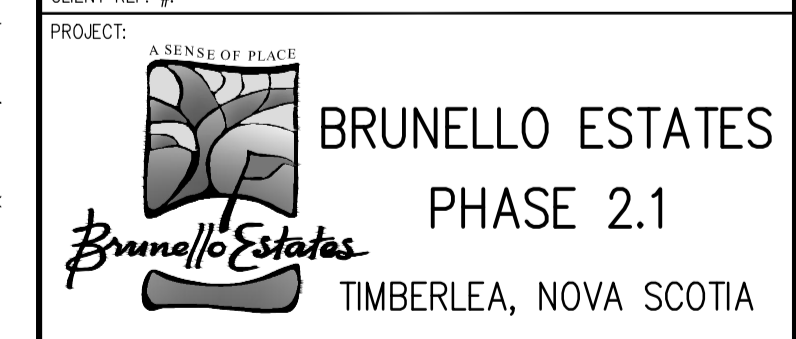
CHECKED BY: C. MUTCH, P.ENG.

SCALE: 1:500 METRIC

CLIENT: BRUNELLO ESTATES INC.

CLIENT REF. #

PROJECT: BRUNELLO ESTATES PHASE 2.1



TITLE: GRADING PLAN

SHEET NUMBER: 5 OF 11

ISSUE: REVISED AT STREET CONSTRUCTION COMPLETION DATE: 2018/10/15

REV # 11

XREFS: (D:\ESL_evaluation\table)

PRINTED: 8:31 AM 2018/10/15 BY: CRAIG LUTZ